



10/25 Flynn Street Port Macquarie, NSW



3



2



1

Contemporary Townhouse in Beachside Location Adjoining Reserve

Immerse yourself in the luxury and lifestyle this multilevel townhouse offers a choice of the vibrant cafe strip, convenience shopping, and Port Macquarie's CBD all only a few minutes drive from your door.

Light filled and beautifully appointed, this home offers a spacious plan. The light filled living and dining area overlooking a private rear courtyard garden with covered entertaining terrace. A contemporary kitchen is the epitome of modern convenience with gas bench top cooking, practical mid height oven, great storage and dishwasher!

Price: Guide \$449,000 to \$459,000

Council Rates: \$1,795.00/year (approx)

Strata Rates: \$1,089.29 p/q

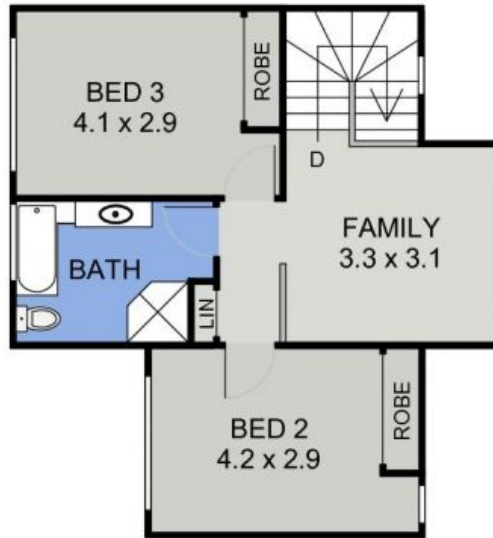
PERCIVAL
PROPERTY

Michelle Percival

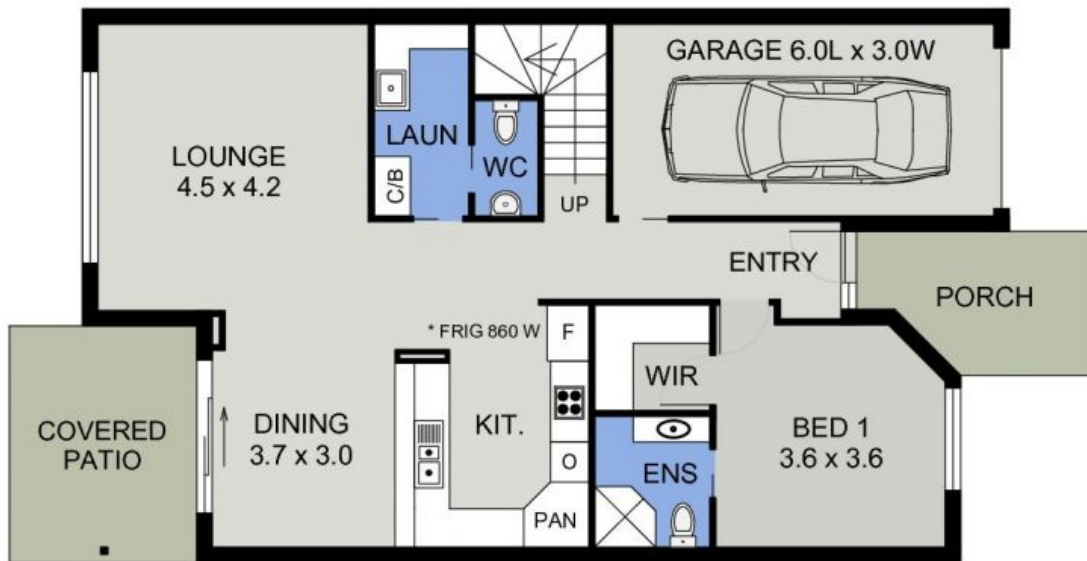
0404 466 500

Ally Downing

0418 392 756



UPPER FLOOR PLAN
(52 sq m Approx)



LOWER FLOOR PLAN
(107 sq m Approx)

10/25 FLYNN STREET
PORT MACQUARIE