



22 Watonga Street Port Macquarie, NSW



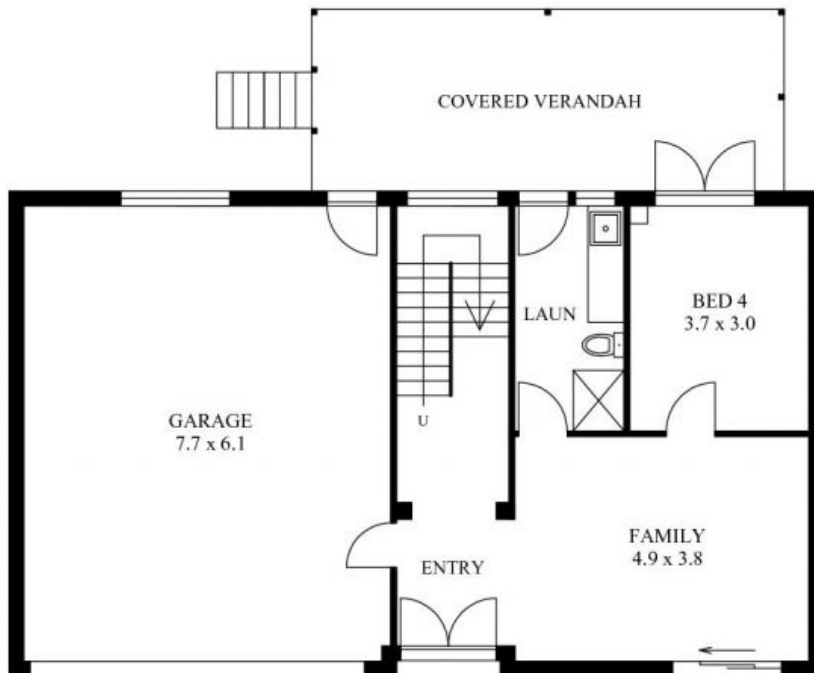
Lighthouse Living on Watonga

Price: Auction

Council Rates: \$2,270.00/year (approx)



**UPPER FLOOR PLAN**  
( 108 sq m Approx )



**LOWER FLOOR PLAN**  
( 107 sq m Approx )

**22 WATONGA STREET**  
**PORT MACQUARIE**