



22 Watonga Street Port Macquarie, NSW



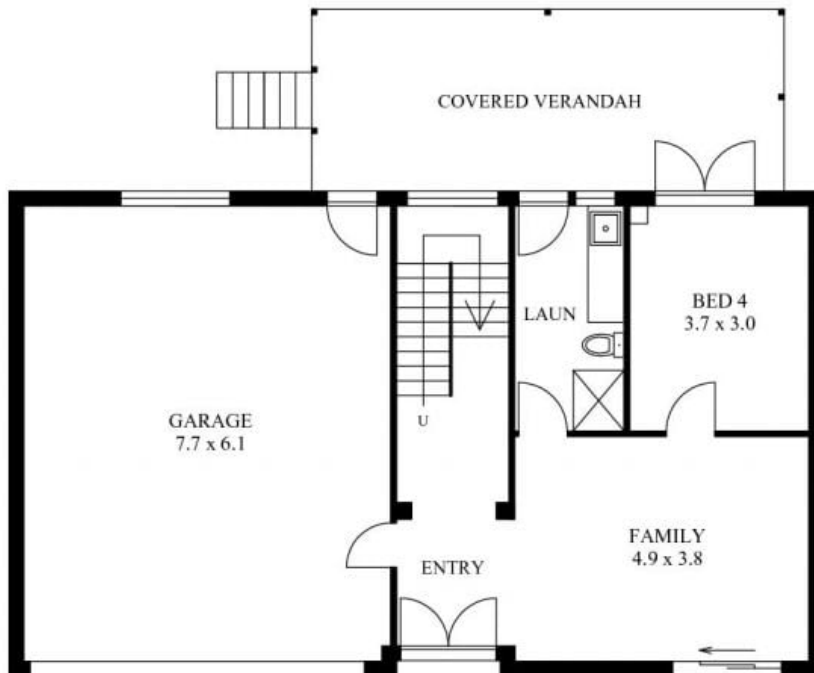
Lighthouse Living on Watonga

Price: Auction

Council Rates: \$2,270.00/year (approx)



UPPER FLOOR PLAN
(108 sq m Approx)



LOWER FLOOR PLAN
(107 sq m Approx)

**22 WATONGA STREET
PORT MACQUARIE**