



3/1a Clarence Street Port Macquarie, NSW



2



2



2

World Class Views - Luxury Contemporary Living!

Embraced by manicured parkland-like-gardens and bordered by historic Allman Hill, "The Heritage" occupies a prized position in the heart of Port Macquarie's vibrant CBD providing stunning views. Poised on the verge overlooking the iconic breakwall, you can gaze west to the hinterland, north to Point Plomer and east to the chameleon brilliance of the Pacific Ocean and watch whales at play, all from the comfort and convenience of your own home.

Drenched in natural light, the use of floor to ceiling glass is softened by curved profiles mirroring the art deco imprint of the building's design.

The spacious open plan living and dining flows seamlessly to a substantial covered entertaining patio - while the sun-lit study and second bedroom each access additional private ba...

Price: Auction - Offers Welcome Prior

Council Rates: \$2,250.00/year (approx)

Strata Rates: \$1,640.00 p/q

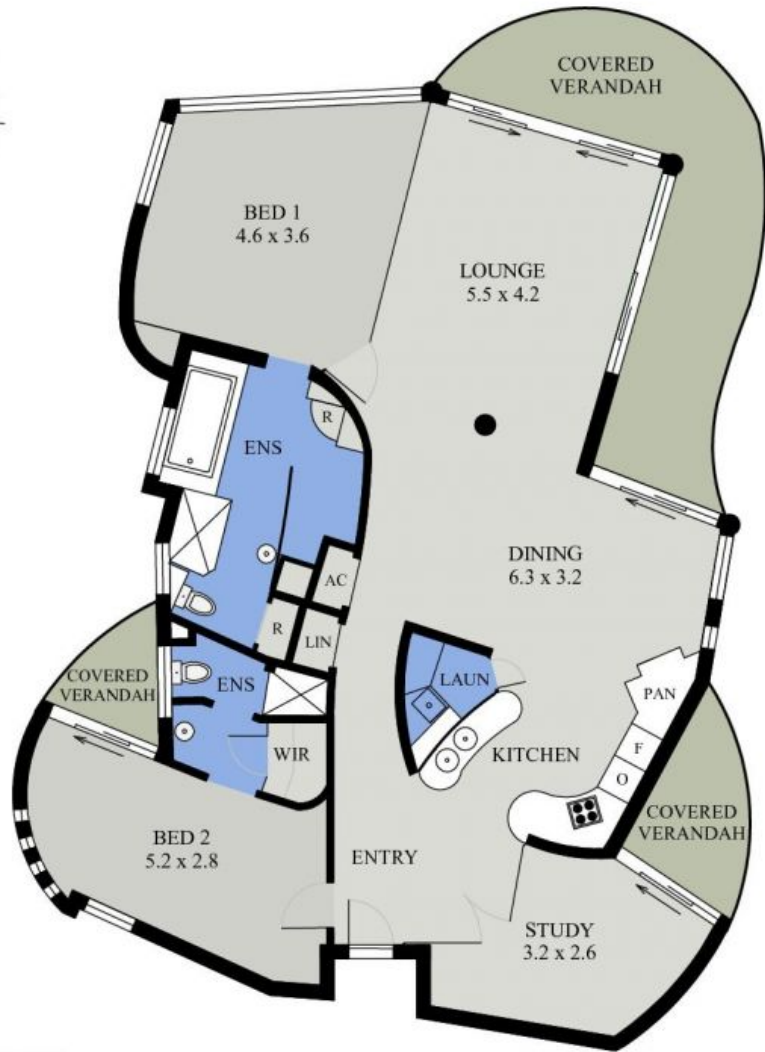
PERCIVAL
PROPERTY

Michelle Percival

0404 466 500

Michelle Percival

0404 466 500



FLOOR PLAN
(173 sq m Approx)

3/1A CLARENCE STREET
PORT MACQUARIE