

43/58 Pacific Drive Port Macquarie, NSW



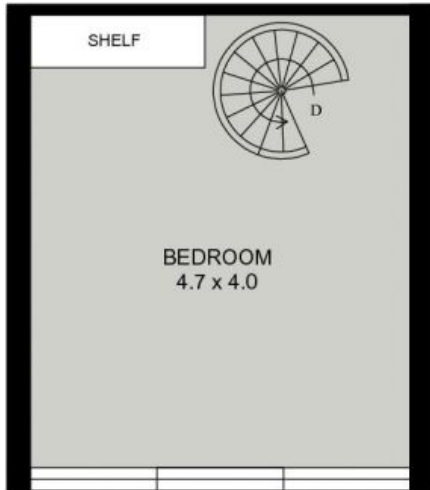
Very Affordable With Ocean Views Opposite The Beach!

43/58 Pacific Drive is only a two minute stroll from dipping your toes in the temperate waters of the Pacific Ocean, or enjoying the waterfront panorama that stretches before you from the sand, or the shaded lawns at beautiful Flynn's Beach. Location alone makes this the perfect holiday letting investment, long term rental or simply an entry level home to call your own!

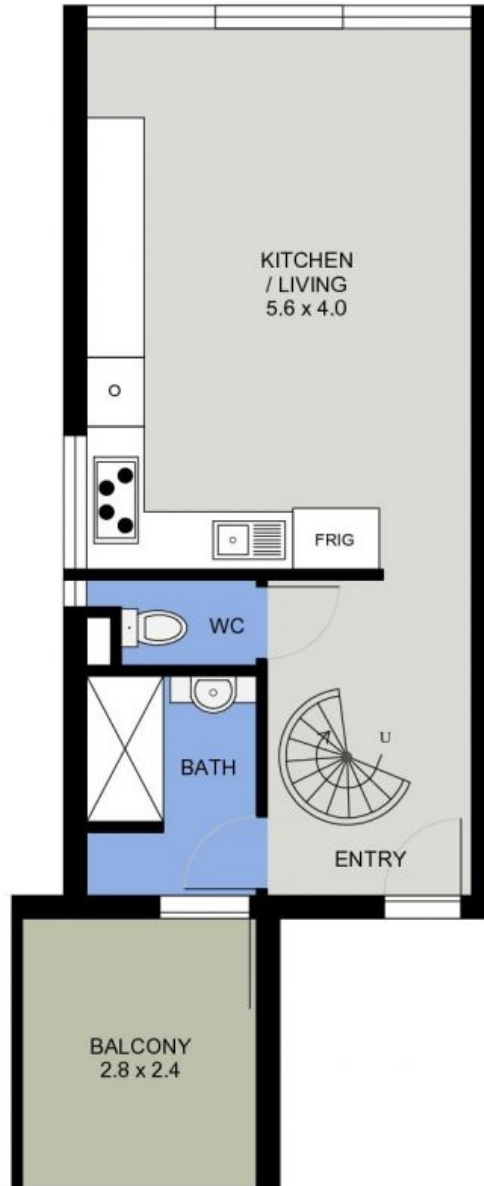
Price: \$230,000

Council Rates: \$1,620.00/year (approx)

Strata Rates: \$678.71 p/q



UPPER FLOOR PLAN
(20 sq m Approx)



MAIN FLOOR PLAN
(39 sq m Approx)

43/58 PACIFIC DRIVE
PORT MACQUARIE