



27 Grandview Parade Port Macquarie, NSW



4



2



2

## Ocean Views - Shelly Beach - Fully Renovated Family Home

Optimising its elevated coastal position with a superb floor plan for family living and effortless entertaining, this dual level home is set within private, fragrant gardens offering wide side access for a boat or van.

A spacious entry hall with vaulted ceiling separates the living zone, lower bedroom wing and upper level access - the character and warmth of hardwood timber floors and high ceilings are featured throughout.

**Price:** \$780,000

**Council Rates:** \$2,800.00/year (approx)

**PERCIVAL**  
PROPERTY

**Michelle Percival**

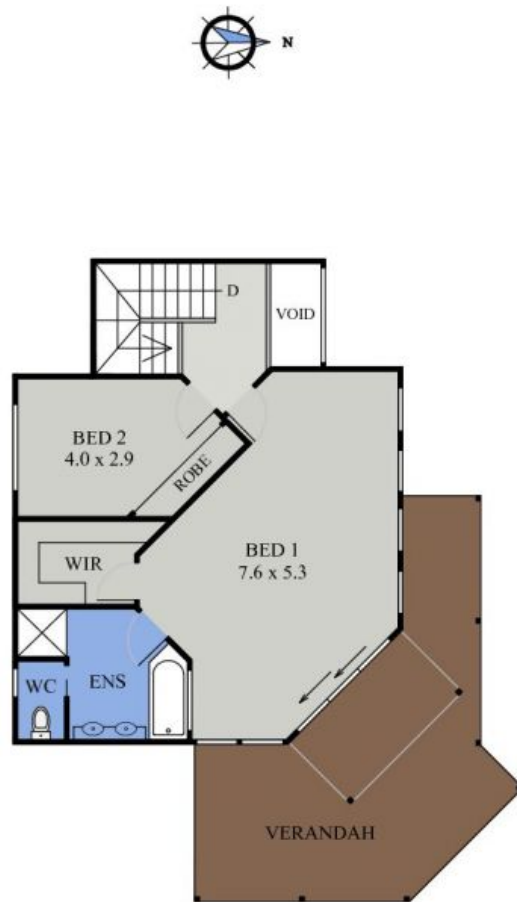
0404 466 500

**Michelle Percival**

0404 466 500



LOWER FLOOR PLAN  
(190 sq m Approx)



UPPER FLOOR PLAN  
(69 sq m Approx)

27 GRANDVIEW PARADE  
PORT MACQUARIE