



27 Grandview Parade Port Macquarie, NSW



Ocean Views - Shelly Beach - Fully Renovated Family Home

Optimising its elevated coastal position with a superb floor plan for family living and effortless entertaining, this dual level home is set within private, fragrant gardens offering wide side access for a boat or van.

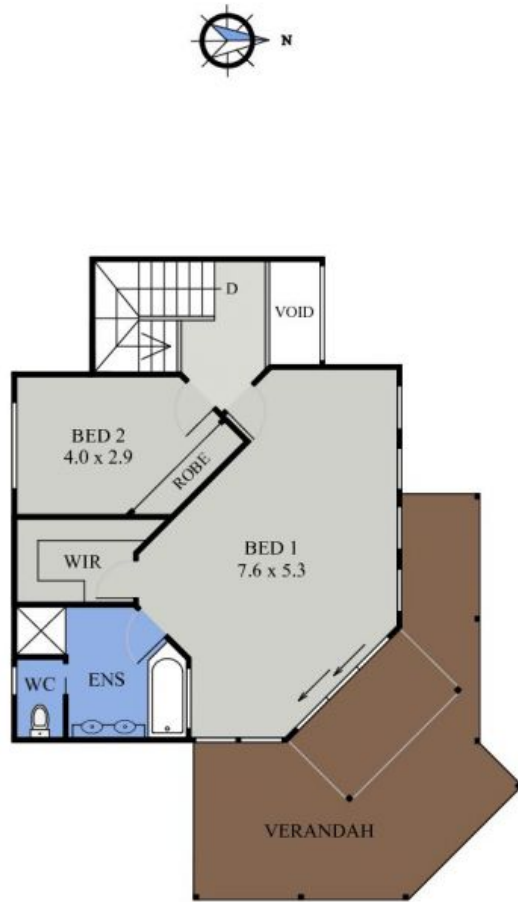
A spacious entry hall with vaulted ceiling separates the living zone, lower bedroom wing and upper level access - the character and warmth of hardwood timber floors and high ceilings are featured throughout.

Price: \$780,000

Council Rates: \$2,800.00/year (approx)



LOWER FLOOR PLAN
(190 sq m Approx)



UPPER FLOOR PLAN
(69 sq m Approx)

27 GRANDVIEW PARADE
PORT MACQUARIE