

66 Jonas Absalom Drive Port Macquarie, NSW



6



4



2

Lighthouse Beach - Large Scale, Low Maintenance, Executive Style Living

This home commands not just size but a convenient location set within a five minute drive of stunning Lighthouse Beach, and two minutes from sensational amenities including large suburban shopping centre, golf course, school and childcare.

A property designed with space and lifestyle in mind it occupies a commanding position, with space to accommodate the largest of families!

The floorplan boasts six generous bedrooms - two with ensuite bathrooms!

Interior living areas enjoy an outlook across the tranquil inground pool to the low maintenance landscaped surrounds with paved poolside terrace PLUS a covered alfresco entertainin...

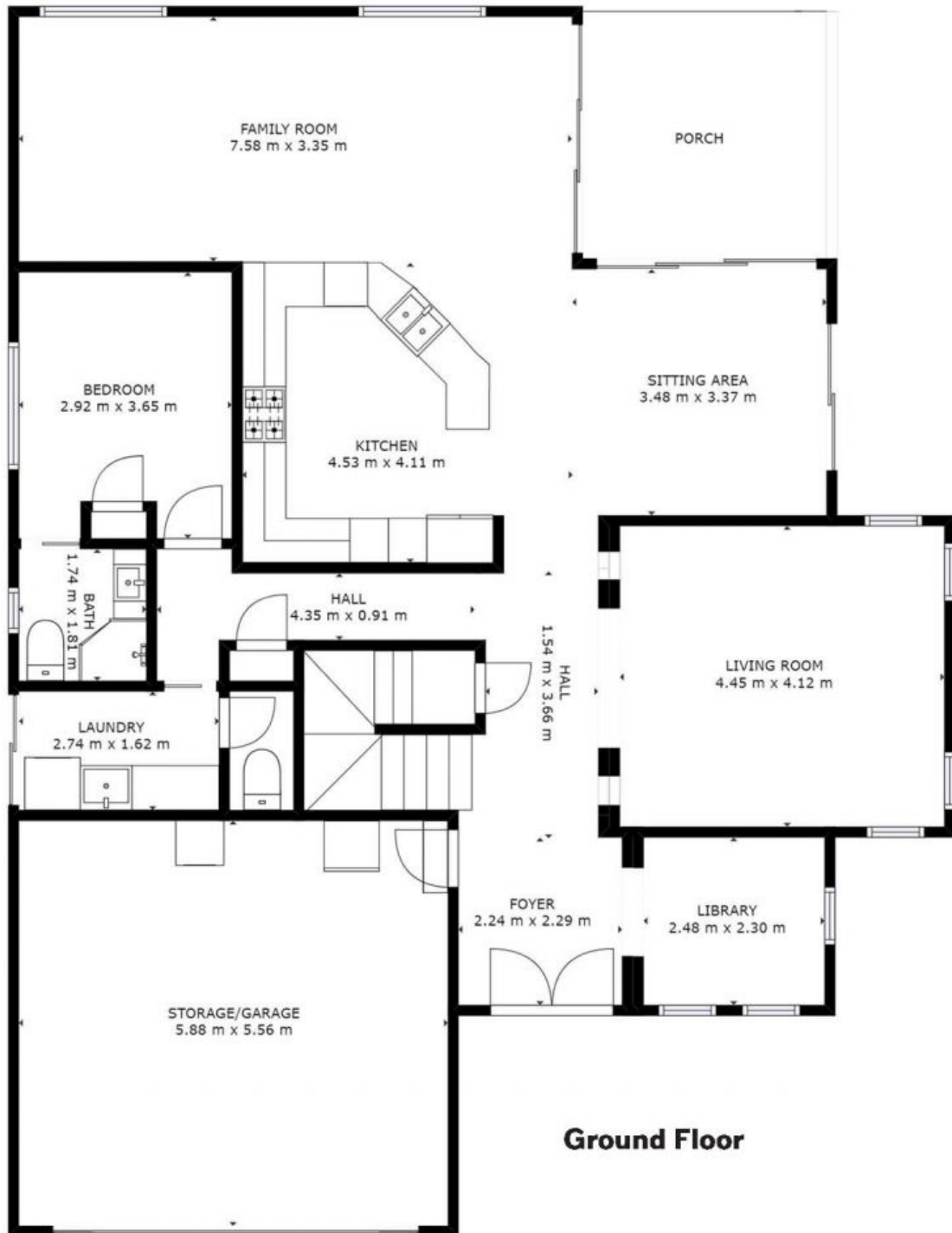
Price: Auction - Offers Welcome Prior

Council Rates: \$2,480.00/year (approx)

PERCIVAL
PROPERTY

Michelle Percival

0404 466 500



GROSS INTERNAL AREA
FLOOR 1 : 163 m², FLOOR 2 : 111 m²
EXCLUDED AREAS : BALCONY: 10 m²
PORCH: 12 m²
TOTAL: 274 m²

SIZES AND DIMENSIONS ARE APPROXIMATE, ACTUAL MAY VARY

66 Jonas Absalom Drive, Port Macquarie



GROSS INTERNAL AREA
FLOOR 1 : 163 m², FLOOR 2 : 111 m²
EXCLUDED AREAS : BALCONY: 10 m²
PORCH: 12 m²
TOTAL: 274 m²

SIZES AND DIMENSIONS ARE APPROXIMATE, ACTUAL MAY VARY

66 Jonas Absalom Drive, Port Macquarie