

66 Jonas Absalom Drive Port Macquarie, NSW



6



4



2

## Lighthouse Beach - Large Scale, Low Maintenance, Executive Style Living

This home commands not just size but a convenient location set within a five minute drive of stunning Lighthouse Beach, and two minutes from sensational amenities including large suburban shopping centre, golf course, school and childcare.

A property designed with space and lifestyle in mind it occupies a commanding position, with space to accommodate the largest of families!

The floorplan boasts six generous bedrooms - two with ensuite bathrooms!

Interior living areas enjoy an outlook across the tranquil inground pool to the low maintenance landscaped surrounds with paved poolside terrace PLUS a covered alfresco entertainin...

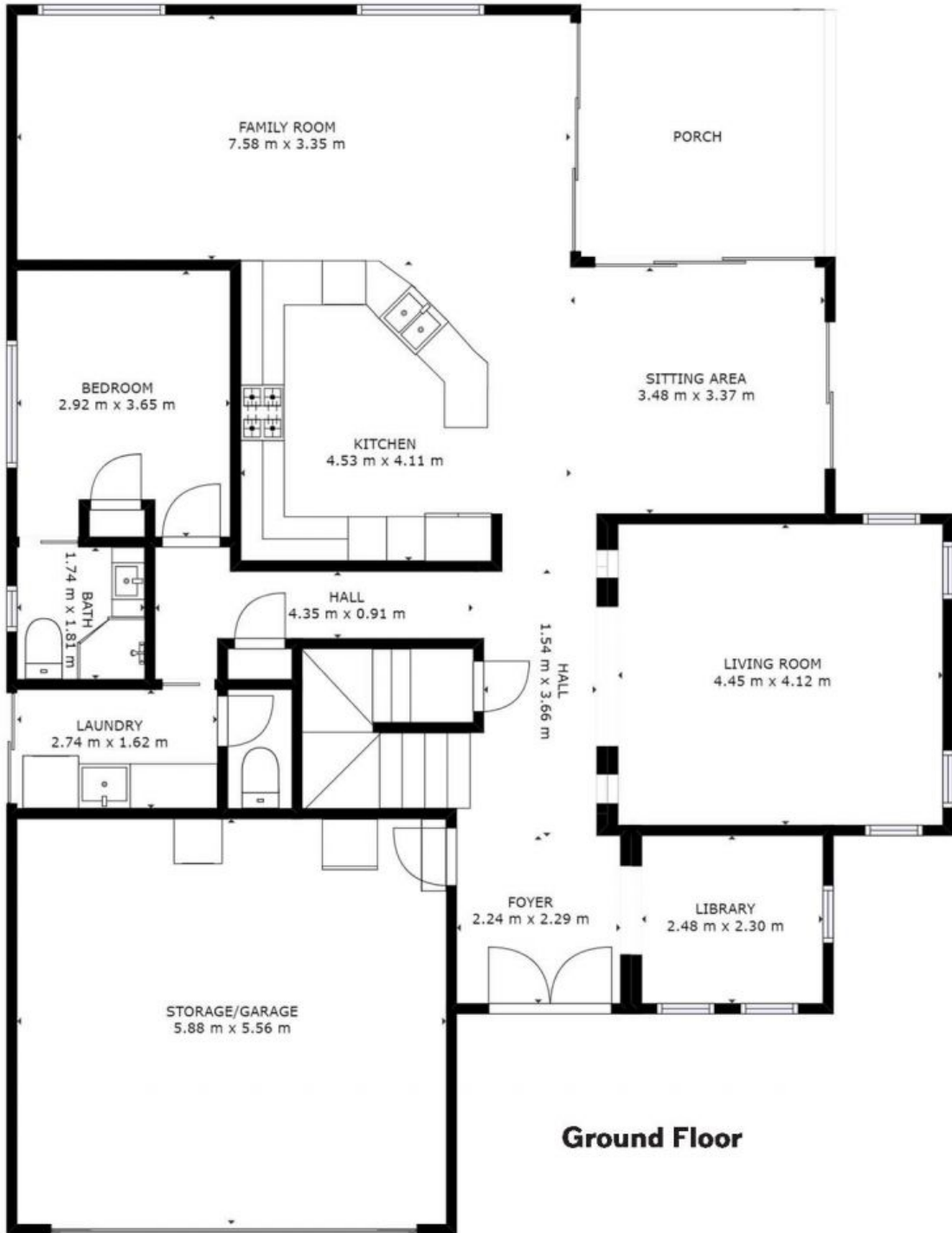
**Price:** Auction - Offers Welcome Prior

**Council Rates:** \$2,480.00/year (approx)

**PERCIVAL**  
PROPERTY

**Michelle Percival**

0404 466 500



**Ground Floor**

GROSS INTERNAL AREA  
 FLOOR 1 : 163 m<sup>2</sup>, FLOOR 2 : 111 m<sup>2</sup>  
 EXCLUDED AREAS - BALCONY: 10 m<sup>2</sup>  
 PORCH: 12 m<sup>2</sup>  
 TOTAL: 274 m<sup>2</sup>  
SIZES AND DIMENSIONS ARE APPROXIMATE, ACTUAL MAY VARY

**66 Jonas Absalom Drive, Port Macquarie**



GROSS INTERNAL AREA  
 FLOOR 1 : 163 m<sup>2</sup>, FLOOR 2 : 111 m<sup>2</sup>  
 EXCLUDED AREAS - BALCONY: 10 m<sup>2</sup>  
 PORCH: 12 m<sup>2</sup>  
 TOTAL: 274 m<sup>2</sup>  
SIZES AND DIMENSIONS ARE APPROXIMATE, ACTUAL MAY VARY

## 66 Jonas Absalom Drive, Port Macquarie