



4/76 Pacific Drive Port Macquarie, NSW



3



2



1

Pristine Sands of Nobby's Beach...East Coast Location!

This Pacific Ocean coastal strip provides parkland, nature walking trails and direct beach access stretching for miles and it's a short 7-10 minute walk to Flynn's Beach surf club, local shops, cafes and popular swimming bay.

There are just 9 units in the complex, features include two sliding doors opening to glass balcony, spacious living area, light filled kitchen, three double size bedrooms including master bedroom with ensuite, internal laundry, single lock up garage at rear and local bus stop nearby.

Council Rates \$2,150pa. Strata Levies \$744pq.

Price: \$525,000

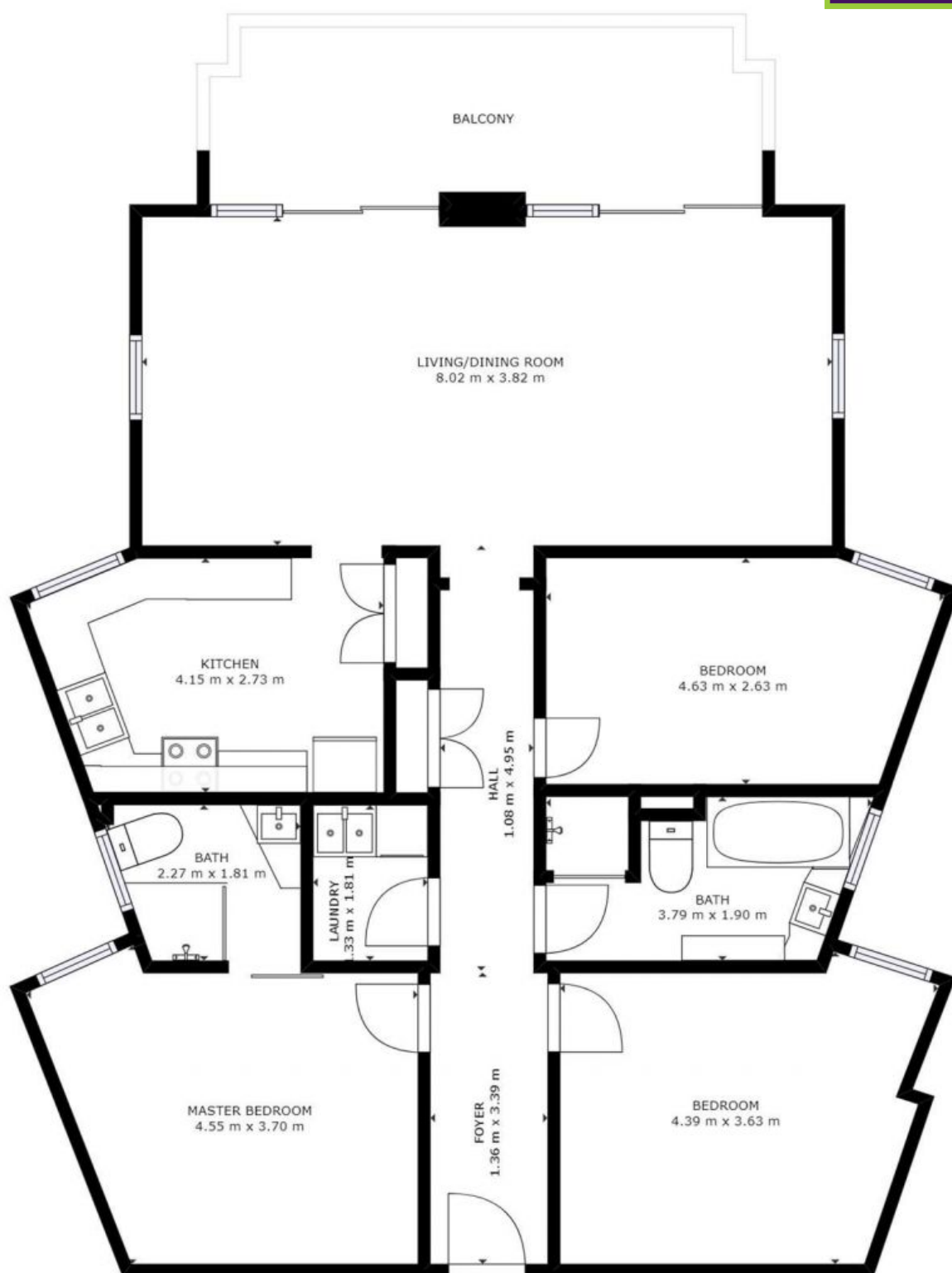
Council Rates: \$2,150.00/year (approx)

Strata Rates: \$744.00 p/q

PERCIVAL
PROPERTY

Michelle Percival

0404 466 500



4/76 Pacific Drive, Port Macquarie