



23b Laguna Place Port Macquarie, NSW



4



2



2

## 'Laguna Moorings' - Lavish Yourself With Lifestyle

'Laguna Moorings' is an exclusive Newport Island address with impeccable credentials. This property is a lifestyle destination with integrated boathouse and ramp providing direct water access.

Capitalising on a sensational location with proximity to marina, major shopping centre, clubs, cafes and restaurants, this stylish haven offers open plan living and an effortless transition to a fabulous entertaining terrace.

Configured for master suite on either level, the ground floor offers a generous bedroom with walk-in robe and luxe ensuite. Of the three remaining bedrooms on the upper level, one offers an alternative master suite with walk-in robe and ensuite access to the master bath. Adding further to the appeal - a covered terrace with sensational elevated waterway vie...

**Price:** \$1,300,000

**Council Rates:** \$2,460.00/year (approx)

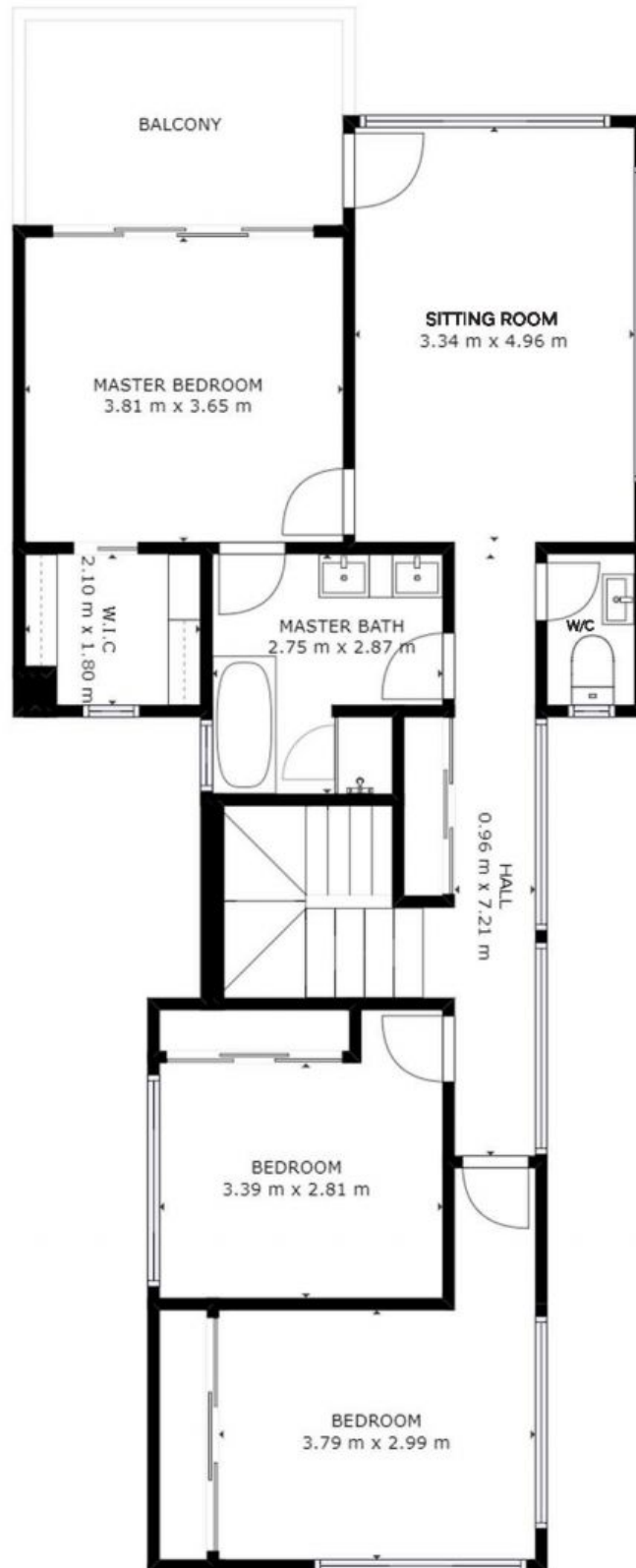
**PERCIVAL**  
PROPERTY

**Percival Property**



**Level 1**

## 23b Laguna Place, Port Macquarie



Level 2

## 23b Laguna Place, Port Macquarie