



23b Laguna Place Port Macquarie, NSW



'Laguna Moorings' - Lavish Yourself With Lifestyle

'Laguna Moorings' is an exclusive Newport Island address with impeccable credentials. This property is a lifestyle destination with integrated boathouse and ramp providing direct water access.

Capitalising on a sensational location with proximity to marina, major shopping centre, clubs, cafes and restaurants, this stylish haven offers open plan living and an effortless transition to a fabulous entertaining terrace.

Configured for master suite on either level, the ground floor offers a generous bedroom with walk-in robe and luxe ensuite. Of the three remaining bedrooms on the upper level, one offers an alternative master suite with walk-in robe and ensuite access to the master bath. Adding further to the appeal - a covered terrace with sensational elevated waterway vie...

Price: \$1,300,000

Council Rates: \$2,460.00/year (approx)

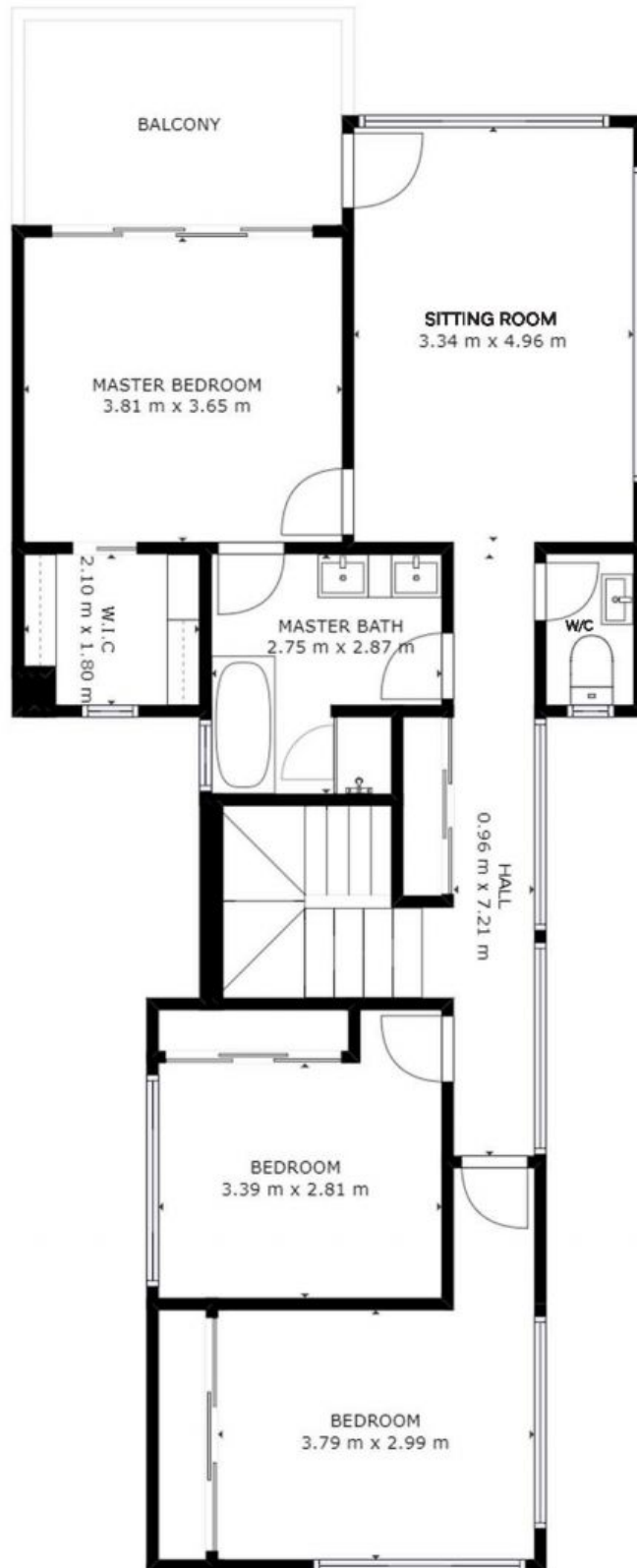


Percival Property



Level 1

23b Laguna Place, Port Macquarie



Level 2

23b Laguna Place, Port Macquarie