



4/110 Pacific Drive Port Macquarie, NSW

3

2

2

## Private Beachside Townhouse - Shelly Beach

The walled courtyard at front and expansive covered deck at rear are an extension of living offering outdoor options year round.

A home to uplift your senses, a superb treed outlook from indoor and outdoor living and proximity to rainforest walks and beaches will appeal for those desiring a tranquil coastal lifestyle.

Designed to optimise space, separated living provides formal lounge and a spacious open plan family/meals zone. Incorporating a stone kitchen with beautiful rainforest views, the electric benchtop cooking, wall oven and dishwasher complement this light filled work space.

Upstairs accommodation incorporates a king size main suite with generous covered balcony, walk-in robe and a large ensuite. Two additional bedrooms offer walk-in storage and are serviced by a master bathroom in neutral tones with spa and separate toilet. A 3rd toilet is...

**Price:** Auction Postponed

**Council Rates:** \$2,170.00/year (approx)

**Strata Rates:** \$750.00 p/q

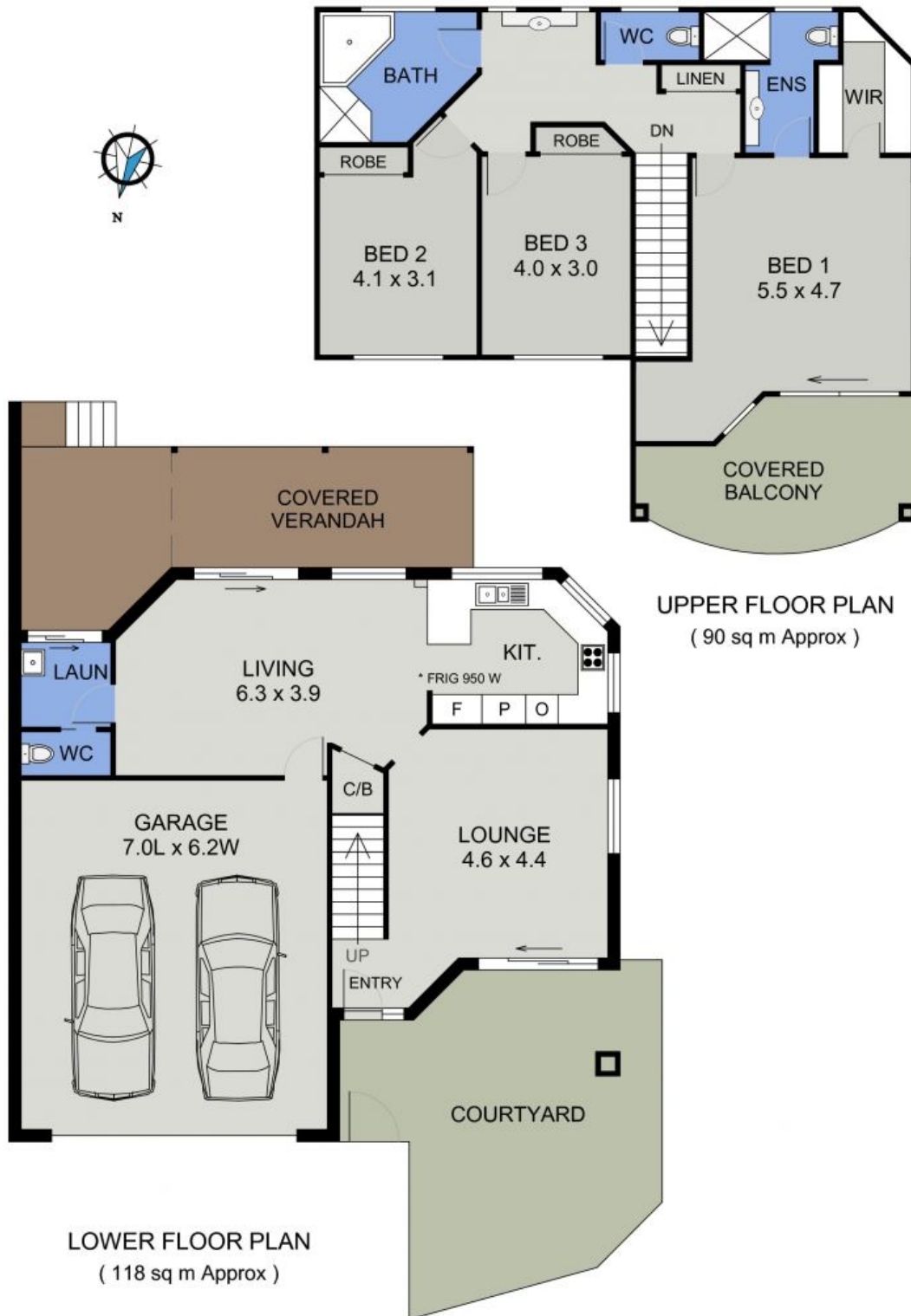
**PERCIVAL**  
PROPERTY

**Michelle Percival**

0404 466 500

**Ally Downing**

0418 392 756



4/110 PACIFIC DRIVE  
PORT MACQUARIE