



43/58 Pacific Drive Port Macquarie, NSW



1



1



1

## Beachside Living With Ocean Views!

Beachside living doesn't get any better! It's only a two minute stroll from cafes and restaurants, from feeling the sand beneath your feet, from a refreshing ocean swim or from one of the most picturesque coastal walks on the Mid North Coast.

Location alone makes this the perfect holiday letting investment, long term rental or simply a turnkey home to call your own!

A combined bathroom and laundry has great proximity to a rear covered entertaining patio with clothesline for practicality. The second level offers a king size bedroom with tree canopy outlook.

Located in the perfect precinct for those who want easy beach access and amenities includi...

**Price:** Guide \$265,000-\$280,000

**Council Rates:** \$1,800.00/year (approx)

**Strata Rates:** \$721.46 p/q

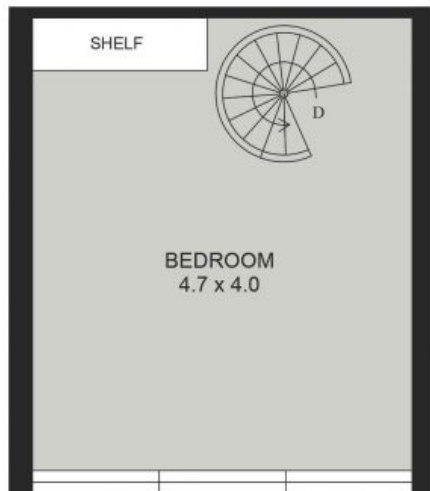
**PERCIVAL**  
PROPERTY

**Michelle Percival**

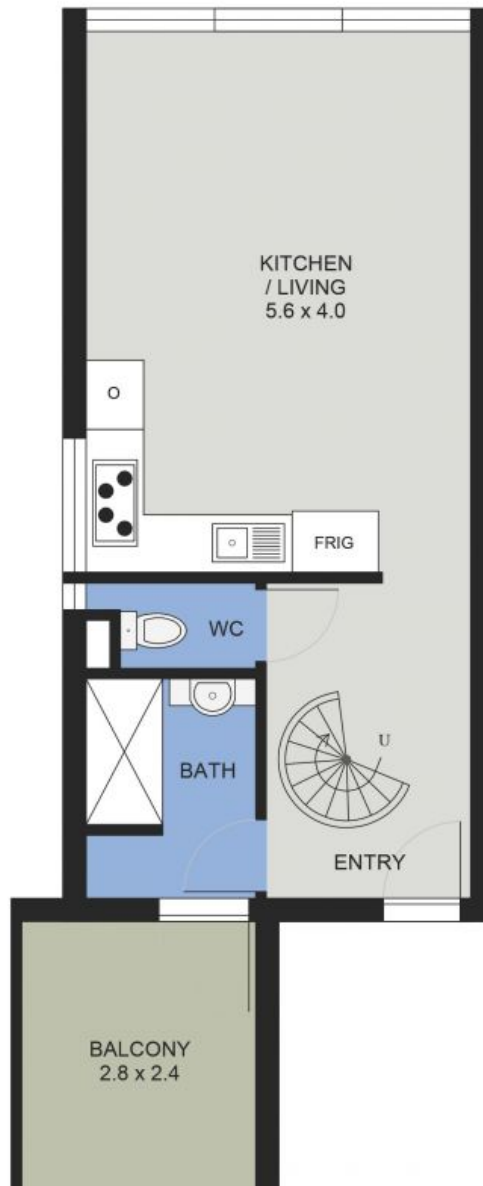
0404 466 500

**Ally Downing**

0418 392 756



UPPER FLOOR PLAN  
( 20 sq m Approx )



MAIN FLOOR PLAN  
( 39 sq m Approx )

43/58 PACIFIC DRIVE  
PORT MACQUARIE