



601/8-10 Hollingworth Street Port Macquarie, NSW

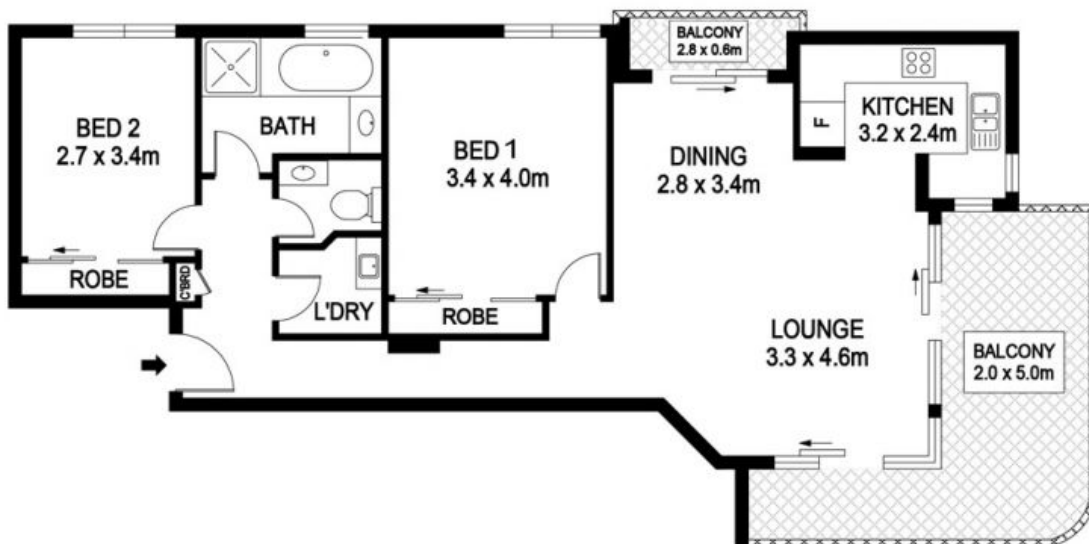
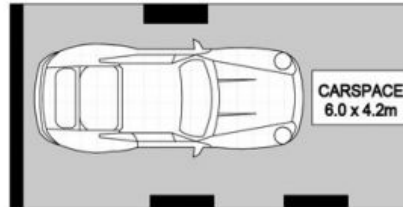
 2

 1

 1

FRESH AND FABULOUS!

Price: \$400 per week



601/8-10 Hollingworth St, Port Macquarie

INTERNAL : 78.8m²
BALCONY : 16.4m²
CARPORT : 25.2m²

DISCLAIMER

PLANS SHOWN ARE FOR MARKETING PURPOSES ONLY, ALL DIMENSIONS ARE APPROXIMATE AND NOT TO SCALE. THEY ARE SUBJECT TO ERRORS AND INACCURACIES AND NO LIABILITY WILL BE ACCEPTED. INTERESTED PARTIES SHOULD MAKE THEIR OWN INQUIRES.