



53 The Summit Road Port Macquarie, NSW

4 2 1

Ocean & Mountain Views - Lighthouse Beach Opportunity

Resplendent with dramatic escarpment and peaceful ocean views, The Summit Road is immersed in a prized pocket just moments from Lighthouse Beach, Watonga St shops and eateries, and walking distance from the highly regarded Tacking Point Public School.

Comfortably enjoy as is, accentuate its potential, or renovate or remodel to create the home of your dreams in a coveted coastal precinct.

Characterised by its elevated outlook, the family lounge flows through to a generous kitchen, dining zone and onto a large deck and fully screened outdoor room with an extraordinary view.

All upstairs bedrooms offer built-in robes and easy access to the master bathroom with corner bath. Downstairs an optional fourth with walk-in robe and second bathroom is easily an...

Price: Auction - Offers Welcome Prior

Council Rates: \$2,850.00/year (approx)

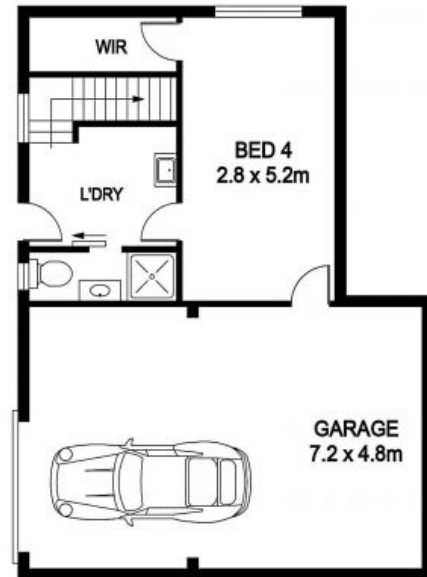


Michelle Percival

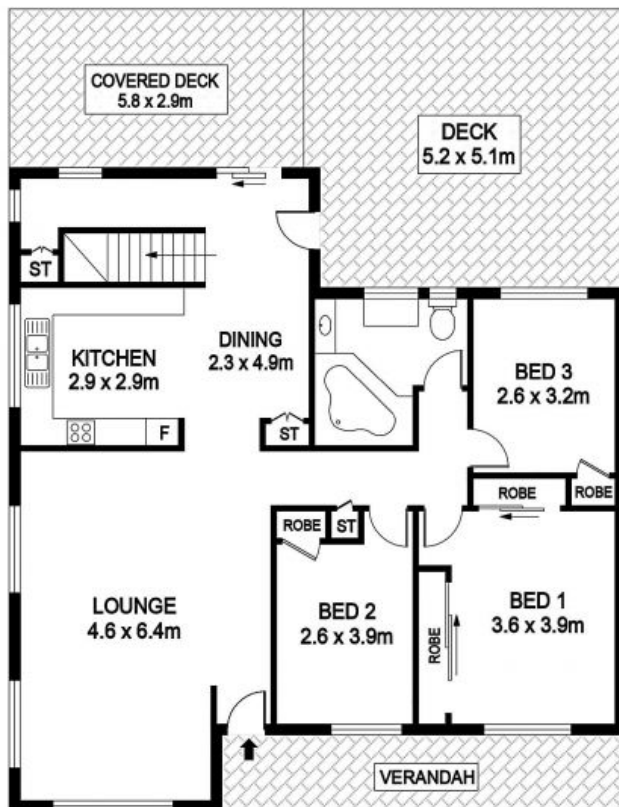
0404 466 500

Ally Downing

0418 392 756



GROUND FLOOR



UPPER FLOOR

GROUND FL : 64.2m²
 UPPER FL : 101.6m²
 DECK : 43.3m²
 VERANDAH : 10.4m²

53 The Summit, Port Macquarie

DISCLAIMER

PLANS SHOWN ARE FOR MARKETING PURPOSES ONLY, ALL DIMENSIONS ARE APPROXIMATE AND NOT TO SCALE. THEY ARE SUBJECT TO ERRORS AND INACCURACIES AND NO LIABILITY WILL BE ACCEPTED. INTERESTED PARTIES SHOULD MAKE THEIR OWN INQUIRES.