



271 Deep Creek Road Hannam Vale, NSW



6



2



6

Magnificent Federation Homestead on Pristine Acreage (36.67 Ha / 90.6 Acres)

This lush emerald green valley of rolling hills and pastures offers endless rural vistas that need to be seen to be believed.

Featuring a large open plan lounge and dining area, high ceilings, polished floors and French doors that open out to wide verandas.

In the hub of this home is a large kitchen and family room which feature vaulted ceilings, a place where your family or guests can gather and enjoy your country hospitality.

Accommodation in the homestead includes 3 bedrooms, with the secluded master bedroom suite which incorporates a large dressing room. The story only continues with a large privately positioned inground pool with pergola that is surrounded by expanses of lawns and lush ga...

Price: \$975,000

Council Rates: \$2,300.00/year (approx)

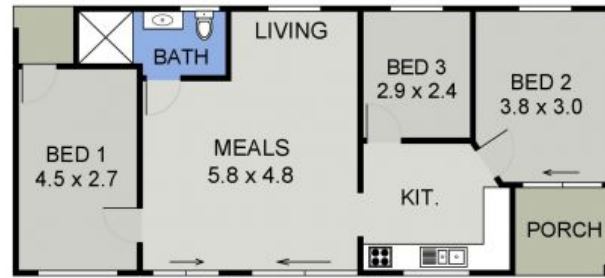
PERCIVAL
PROPERTY

Martin Newell

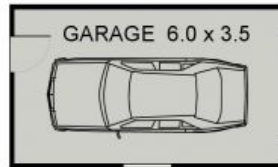
0429 883 488

Martin Newell

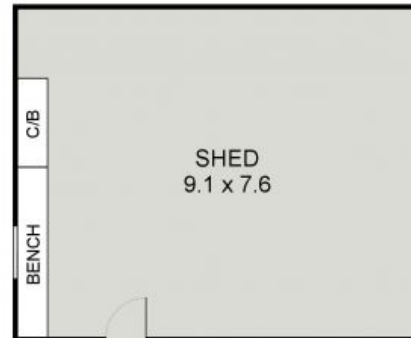
0429 883 488



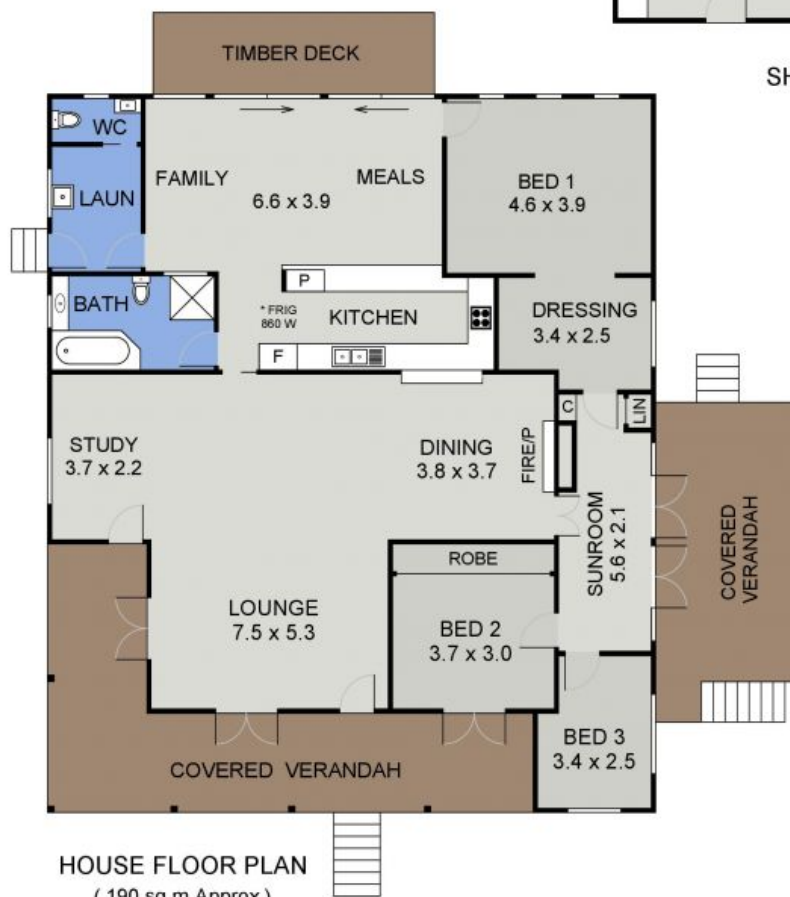
COTTAGE FLOOR PLAN
(77 sq m Approx)



SEPARATE GARAGE



SHED PLAN



HOUSE FLOOR PLAN
(190 sq m Approx)

271 DEEP CREEK RD
HANNAM VALE.