



16/27-29 Waugh Street Port Macquarie, NSW



2



1



1

## Walk to Waterfront - Spacious Central Apartment

Occupying a first floor position in a security building, this is the perfect haven for those looking for airy, spacious living.

Showcasing an open plan, the expansive dining and lounge zone opens through to a full width covered balcony creating an extension of living.

The contemporary kitchen is equipped with great storage, electric cooking and large fridge cavity, while an oversize bathroom has ensuite access from the oversize master bedroom with balcony access.

Bedrooms each have built-in robes, a large laundry offers additional storage space and a second toilet is a handy convenience.

Lift access, secure parking, spacious lobbies and an inground pool within the complex crea...

**Price:** Guide \$345,000-\$369,000

**Council Rates:** \$1,716.00/year (approx)

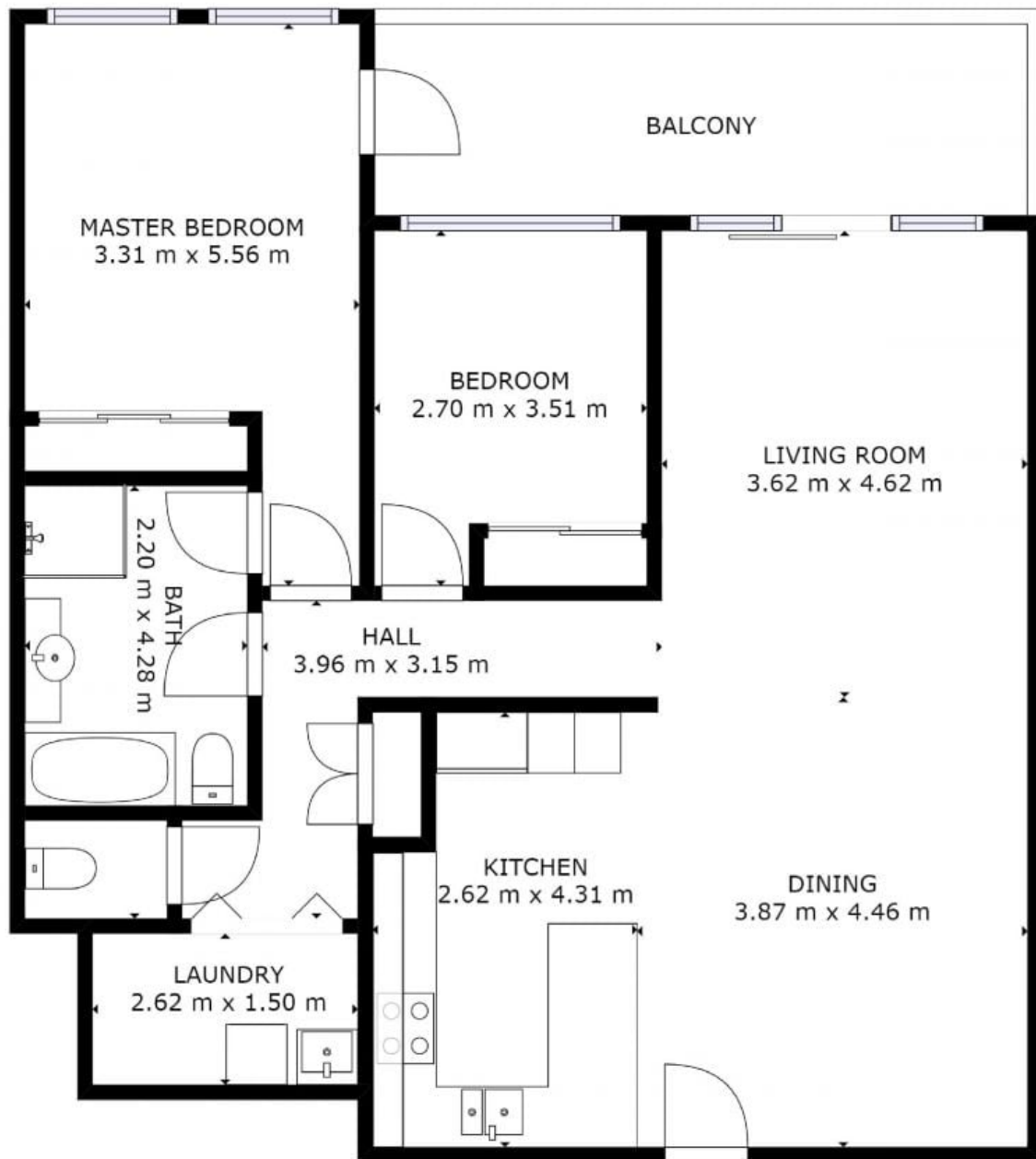
**PERCIVAL**  
PROPERTY

**Michelle Percival**

0404 466 500

**Ally Downing**

0418 392 756



**16/27-29 Waugh Street, Port Macquarie**

GROSS INTERNAL AREA  
FLOOR 1: 94 m<sup>2</sup>  
TOTAL: 94 m<sup>2</sup>

SIZES AND DIMENSIONS ARE APPROXIMATE, ACTUAL MAY VARY.