



5b Tomark Place Port Macquarie, NSW



3



2



2

## A Flawless Contemporary Retreat

Set on 279.4sqm with tranquil reserve outlook at rear, the dual level floor plan is instantly engaging.

Superbly stylish, bamboo flooring creates flow from the wide entrance hall, through spacious living zones, opening onto a covered entertaining patio at rear.

A spacious powder room with floating vanity, laundry with under bench and built-in storage, and internal access to the double auto garage complete lower level amenities.

Upstairs, the pièce de résistance is a stunning master offering five star hotel suite luxury and layout. Intimate treetop views across the reserve provide a backdrop to the deep freestanding bath with floor mounted tapware. The floating vanity is a simple statement in s...

**Price:** Guide \$595,000-\$625,000

**Council Rates:** \$2,500.00/year (approx)

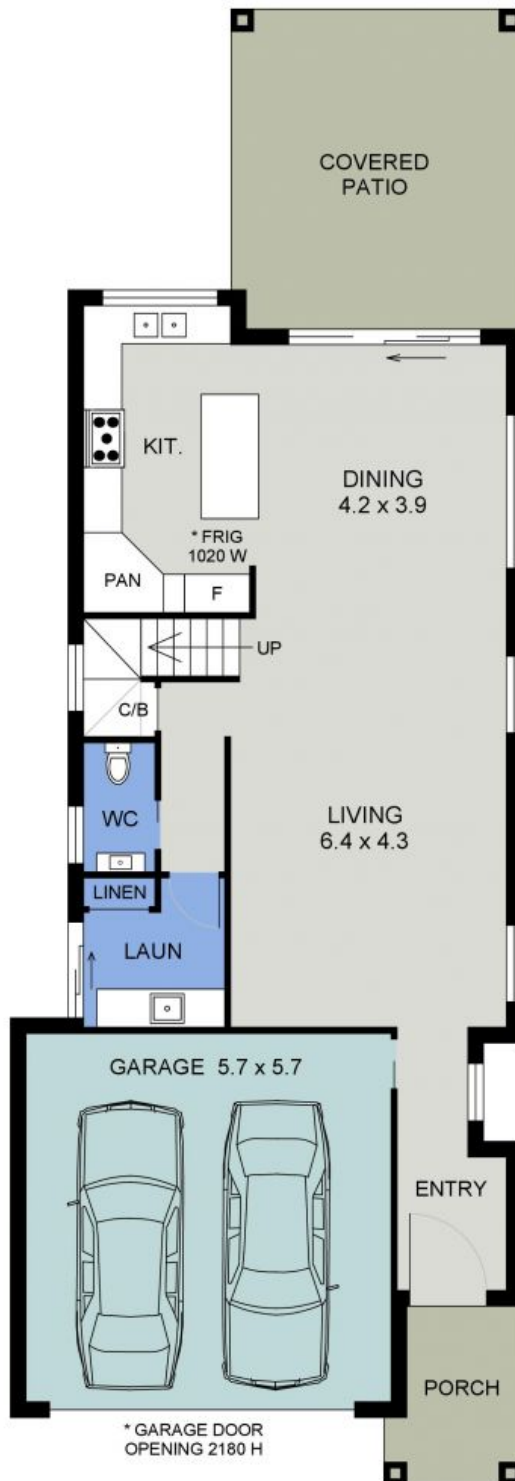
**PERCIVAL**  
PROPERTY

**Michelle Percival**

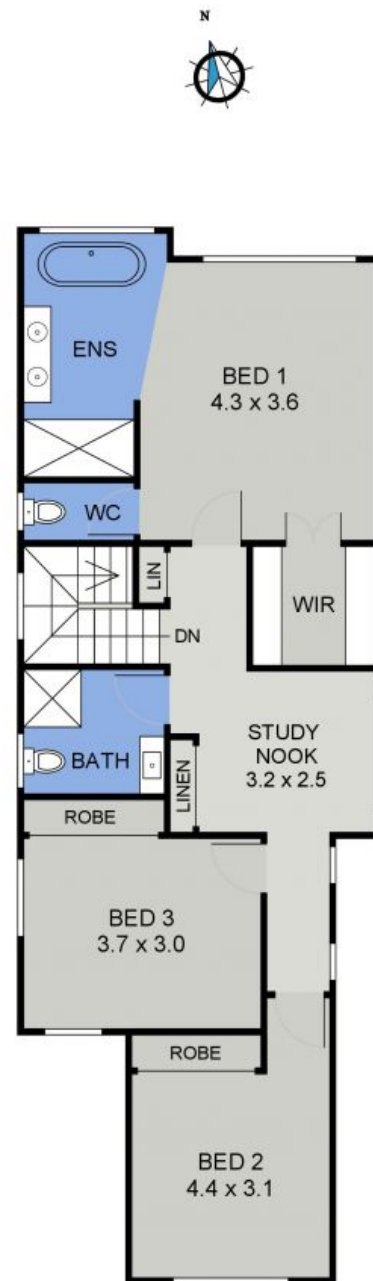
0404 466 500

**Ally Downing**

0417 929 726



LOWER FLOOR PLAN  
( 124 sq m Approx )



UPPER FLOOR PLAN  
( 81 sq m Approx )

5B TOMARK PLACE  
PORT MACQUARIE