



4/3 Oxley Crescent Port Macquarie, NSW



2



1



1

Newly Renovated - Walk to Town & Beach!

Combined with an Eastport location where its elevation captures sea breezes and the ocean lulls you to sleep at night, this package is perfect for the first home buyer or astute investor!

New flooring, fresh paintwork, new window furnishings, updated kitchen with new upright cooktop and contemporary bathroom will appeal to all who inspect.

Light filled, open plan living is adjacent to an enclosed, covered verandah with laundry. Utilise as the perfect drying room and an alternate to the common clothesline area set within the grounds of a complex of only six.

Built-in robes to two bedrooms are convenient, as is covered off street parking.

...

Price: Guide \$299,000 - \$315,000

Council Rates: \$1,960.00/year (approx)

Strata Rates: \$1,300.00/year (approx)

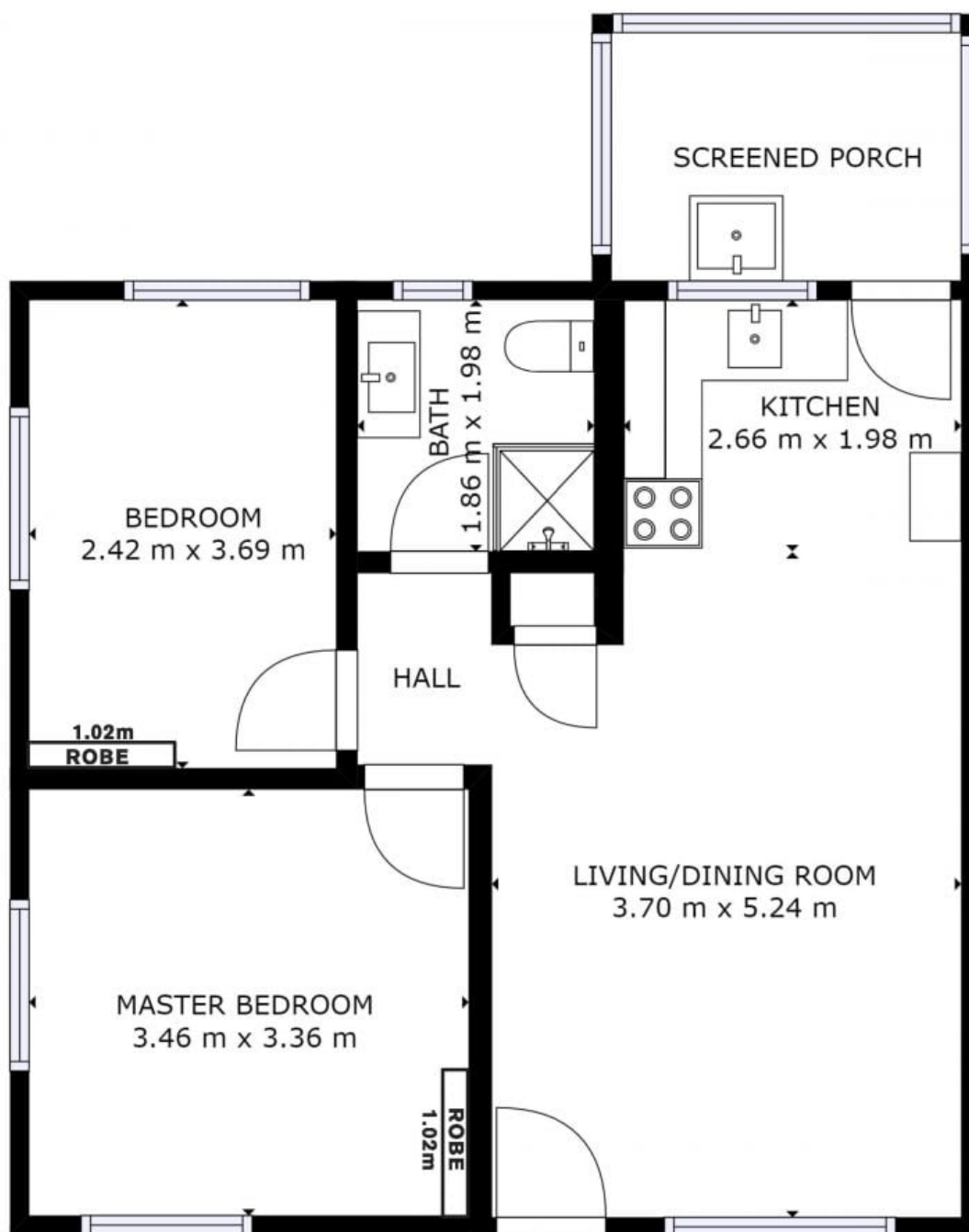
PERCIVAL
PROPERTY

Ally Downing

0418 392 756

Ally Downing

0418 392 756



FLOOR 1

4/3 Oxley Crescent, Port Macquarie