



11 Plymouth Place Port Macquarie, NSW



3



2



2

Family Perfection with Reserve to the Rear

An impressive north facing alfresco zone offers an elevated deck, poolside deck and character laden covered outdoor entertaining area with level, fully-fenced lawns.

If you covet a private setting and serene outlook combined with effortless living, then look no further.

A versatile floor plan is adorned with contemporary comforts and quality appointments and, with a renovation, could capitalise further on its ocean facing aspect.

The ample master suite has abundant built-in storage and spacious contemporary ensuite. Tw...

Price: Guide \$690,000-\$720,000

Council Rates: \$2,650.00/year (approx)

PERCIVAL
PROPERTY

Michelle Percival

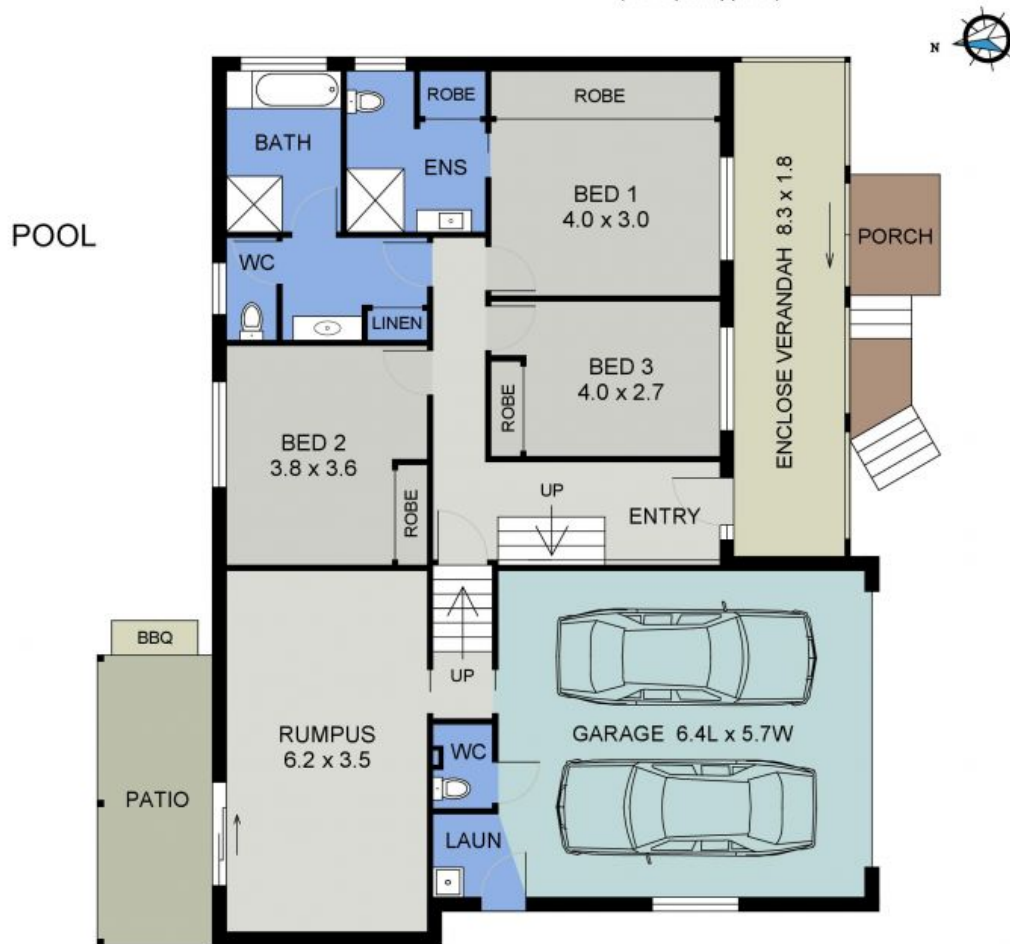
0404 466 500

Ally Downing

0417 929 726



UPPER FLOOR PLAN
(70 sq m Approx)



LOWER FLOOR PLAN
(170 sq m Approx)

11 PLYMOUTH PLACE
PORT MACQUARIE