



53 Jonas Absalom Drive Port Macquarie, NSW



4



2



2

Fabulous family home at Lighthouse Beach

Owing to a great floor plan this family home offers three generous and separate living zones. The formal lounge has high raked ceilings. The large dining and family rooms adjacent to the kitchen are fantastic casual living areas, serviced by a nearby powder room.

Outside to a sunny and covered timber deck that overlooks the beautiful reserve, a great spot to unwind with a coffee and the paper. Some additional features include air conditioning, brand new carpets, under house storage plus caravan or boat parking bay.

Don't let this opportunity slip through your fingers, book your inspection today.

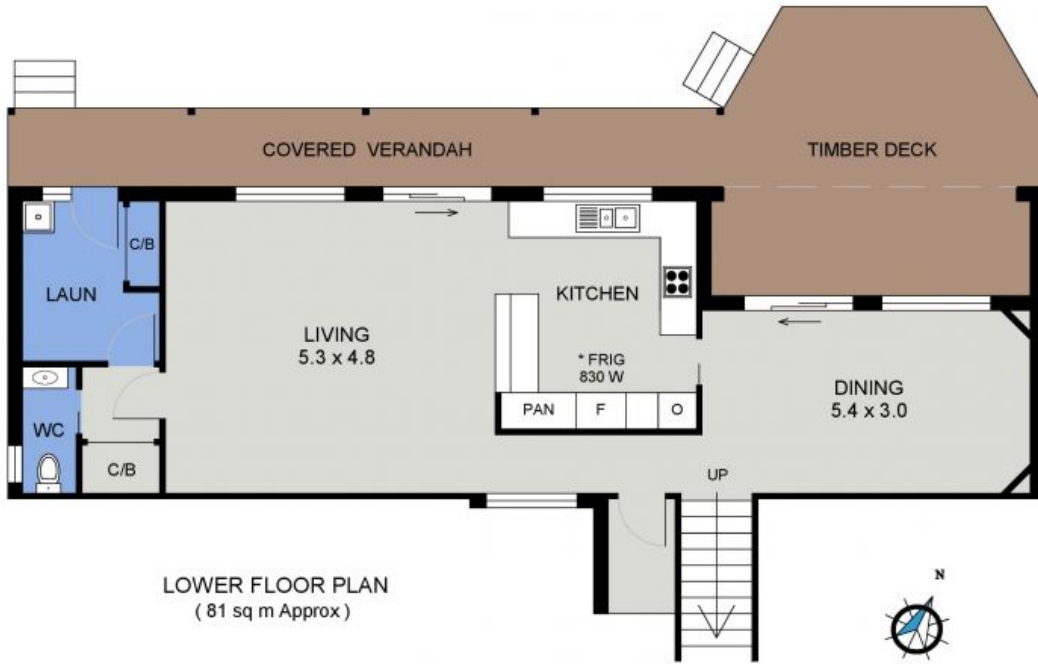
Price: \$639,000

Council Rates: \$2,700.00/year (approx)



Michelle Percival

0404 466 500



LOWER FLOOR PLAN
(81 sq m Approx)



* GARAGE DOOR
OPENING 2190 H

UPPER FLOOR PLAN
(183 sq m Approx)

53 JONAS ABSALOM DRIVE
PORT MACQUARIE