

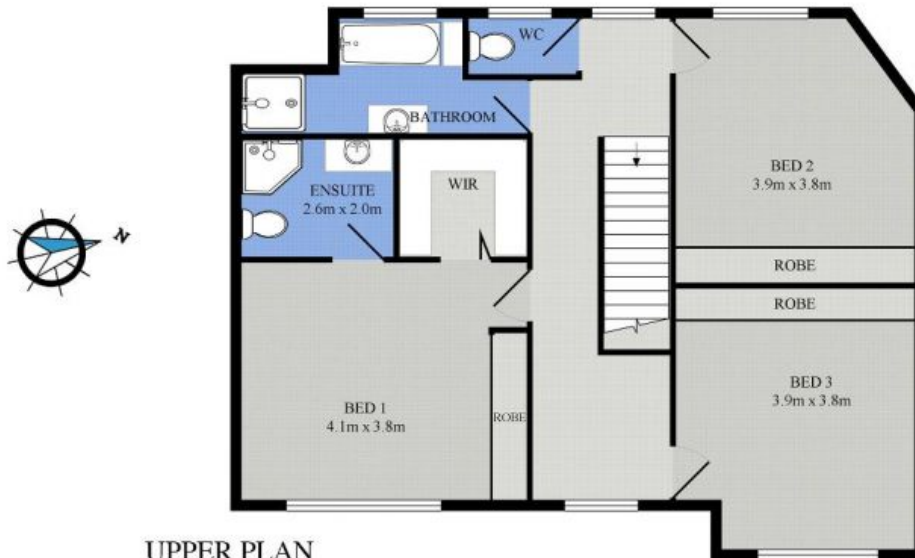


2/5 Leanda Street Port Macquarie, NSW



A FOUR MINUTE WALK FROM SURF & SAND
AT SHELLY & NOBBYS BEACHES!

Price: \$475 per week



UPPER PLAN
(89sq m Approx)



2/5 LEANDA
PORT MACQUARIE

LOWER PLAN
(132sq m Approx)