



5/6 Hollingworth Street Port Macquarie, NSW

2 1 1

### Hassle Free CBD Living - No Car Required!

Situated just moments from the riverfront and walking distance to the beach, this address is perfect for the scaled down lifestyle, holiday hideaway, or investment.

Located within the 'Karalee' complex, this elevated apartment has a delightful outlook from its full width covered outdoor patio across Kooloonbung Creek, placing it an enviable distance from the delights of central living.

Level access to clubs, restaurants, cafes, shopping and a waterfront walk that meanders along the town precinct foreshore create the framework for a sensational in-town lifestyle.

A generous contemporary kitchen with electric benchtop cooking, underbench oven and great ...

**Price:** Guide \$355,000-\$375,000

**Council Rates:** \$2,200.00/year (approx)

**Strata Rates:** \$538.05 p/q

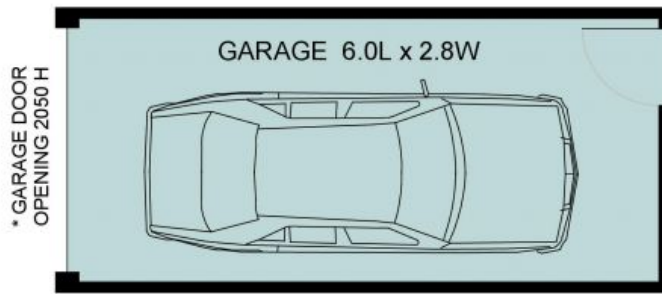


**Ally Downing**

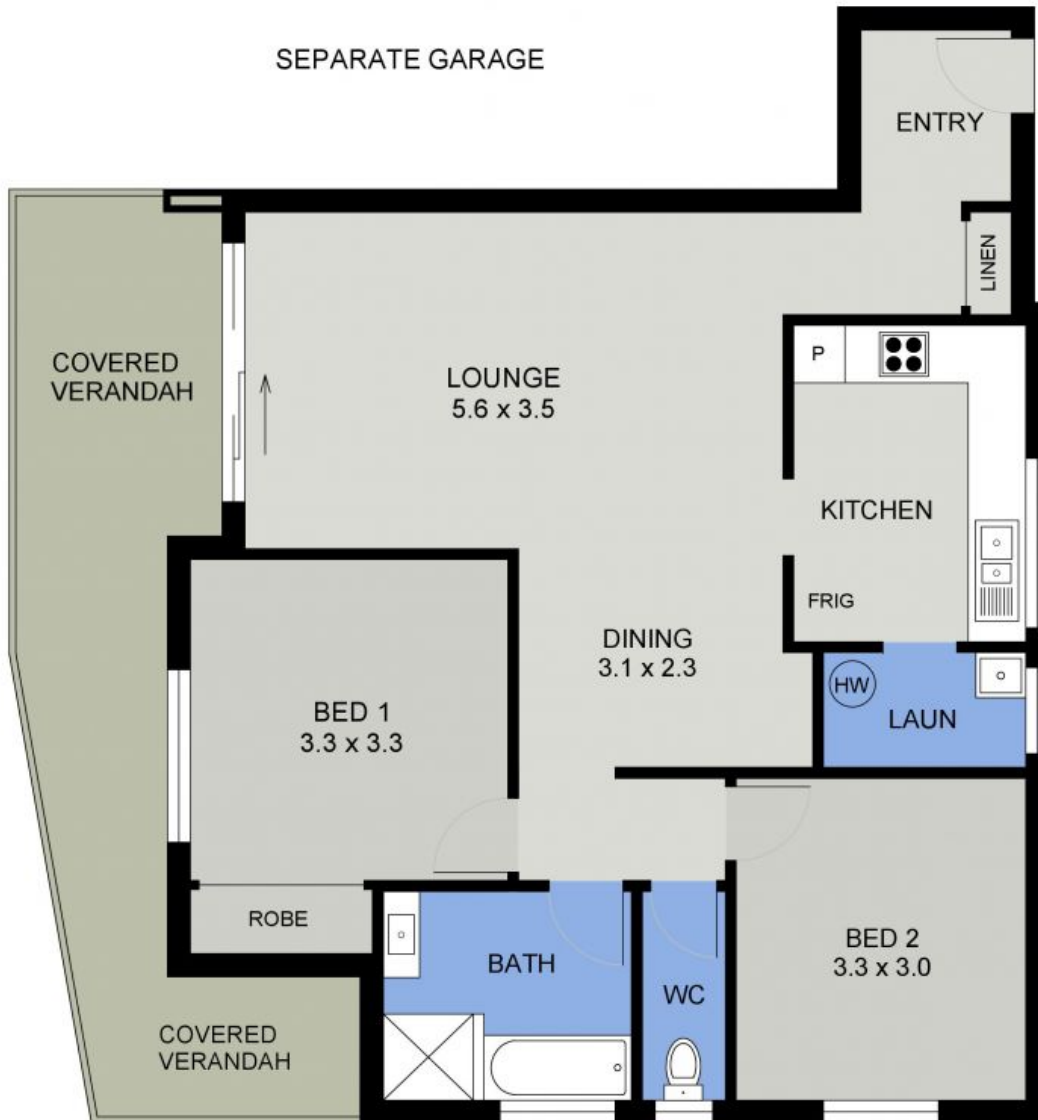
0417 929 726

**Ally Downing**

0417 929 726



SEPARATE GARAGE



FLOOR PLAN  
( 85 sq m Approx )

5/6 HOLLINGWORTH ST  
PORT MACQUARIE