



4/2 Currawong Drive Port Macquarie, NSW

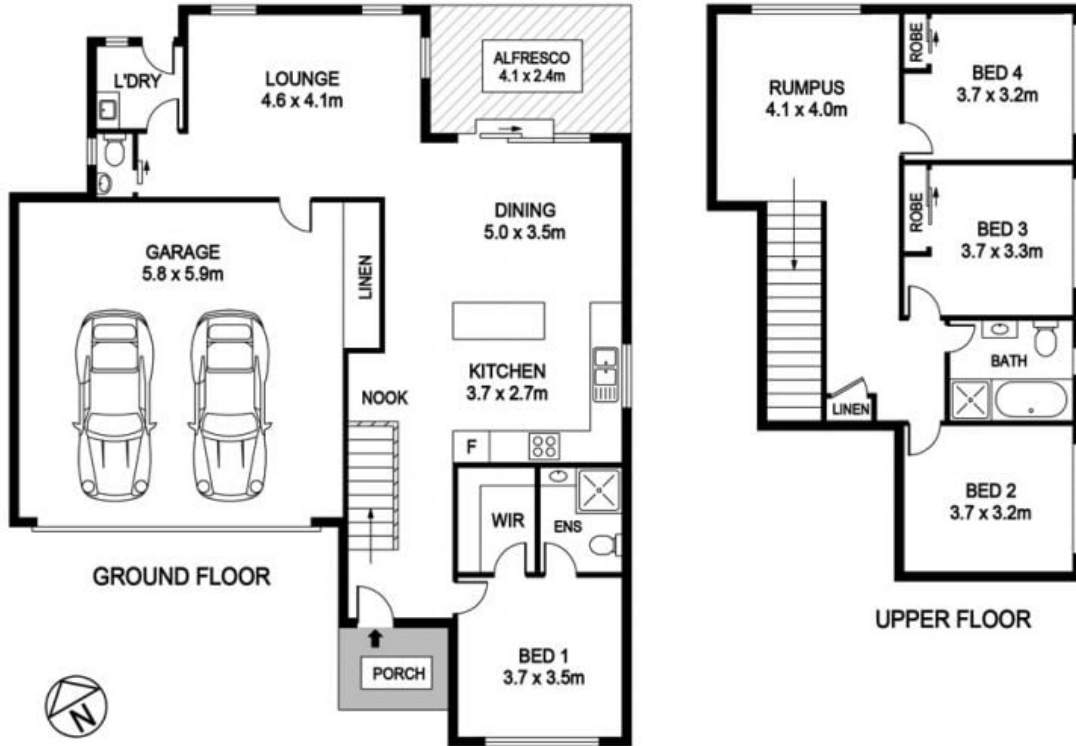
 4

 2

 2

STUNNING, SPACIOUS AND STYLISH!

Price: \$520 per week



4 / 2 Currawong Dr, Port Macquarie

INTERNAL : 179.14 m²
GARAGE : 34.22 m²

DISCLAIMER

PLANS SHOWN ARE FOR MARKETING PURPOSES ONLY. ALL DIMENSIONS ARE APPROXIMATE AND NOT TO SCALE. THEY ARE SUBJECT TO ERRORS AND INACCURACIES AND NO LIABILITY WILL BE ACCEPTED. INTERESTED PARTIES SHOULD MAKE THEIR OWN INQUIRES.