



40/58 Pacific Drive Port Macquarie, NSW



3



2



2

### Three bedrooms, Beachside & Affordable

You can't secure a three bedroom apartment at this price point anywhere else in Port Macquarie. Did I mention it offers stunning beach views and a double lock up garage?

Split level, top floor apartment with 3 private balconies. The entry level offers a generous sized open plan kitchen that flows out to the living area and onto the entertaining undercover balcony.

**Price:** \$495,000

**Council Rates:** \$1,950.00/year (approx)

**Strata Rates:** \$1,054.45 p/q

Council Rates \$1,950pa Strata Levies \$1,054.45pq

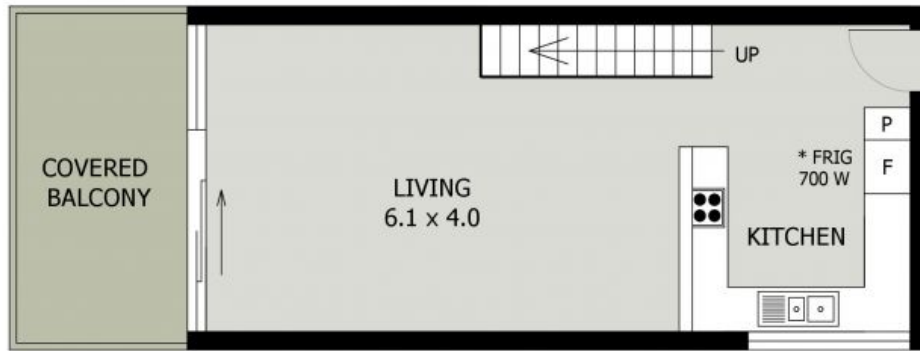
**PERCIVAL**  
PROPERTY

**Ayla Bailey**

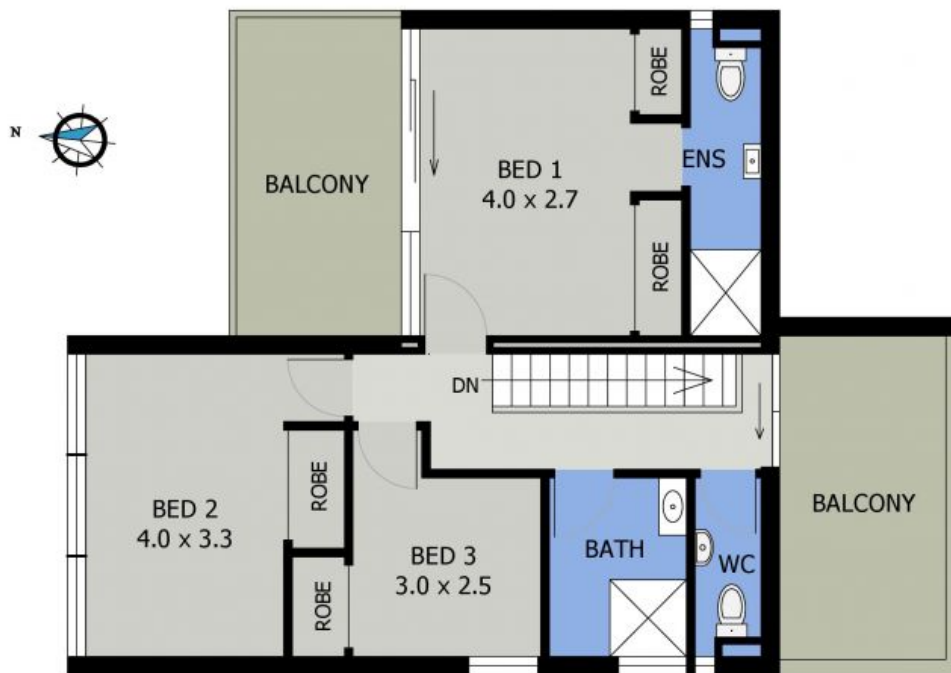
0431 194 876

**Ayla Bailey**

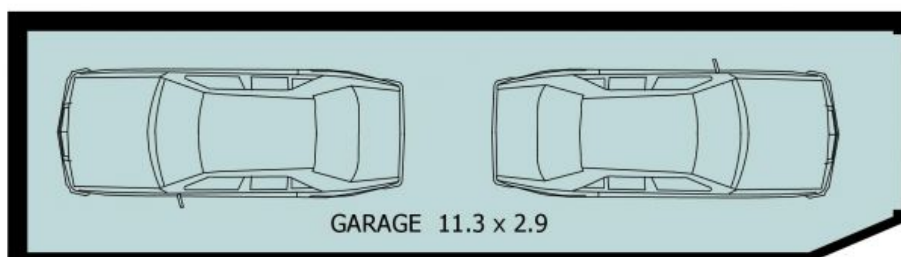
0431 194 876



LOWER FLOOR PLAN  
( 41 sq m Approx )



UPPER FLOOR PLAN  
( 62 sq m Approx )



SEPARATE GARAGE

40/58 PACIFIC DRIVE  
PORT MACQUARIE