



PERCIVAL
PROPERTY



PERCIVAL



PERCIVAL



31 Koree Island Road Beechwood, NSW



5



3



2

Beyond All Expectations

Located in the highly regarded riverside village of Beechwood, which is a 22 minute drive from Port Macquarie and just 8 minutes from Wauchope. Unlike many small villages, Beechwood has many local services and business, such as its own Primary School, Hotel, Post Office and Cafe.

The home is in a commanding position on 7245 Sqm / 1.7 acres of landscaped gardens and sprawling lush lawns, from where outstanding valley and country views are admired.

The large kitchen includes quality appliances, island bench, plenty of storage and will surely impress any chef.

The wide central hallway leads you to the four bedrooms on the upper level and main three way bathroom which includes a spa bath. The master suite includes a large ensuite and walk...

Price: \$985,000

Council Rates: \$1,670.00/year (approx)

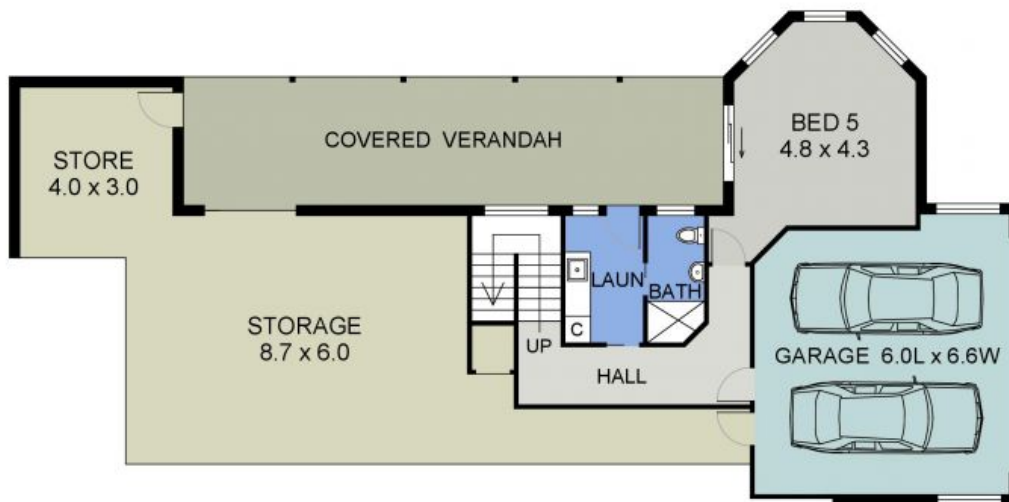
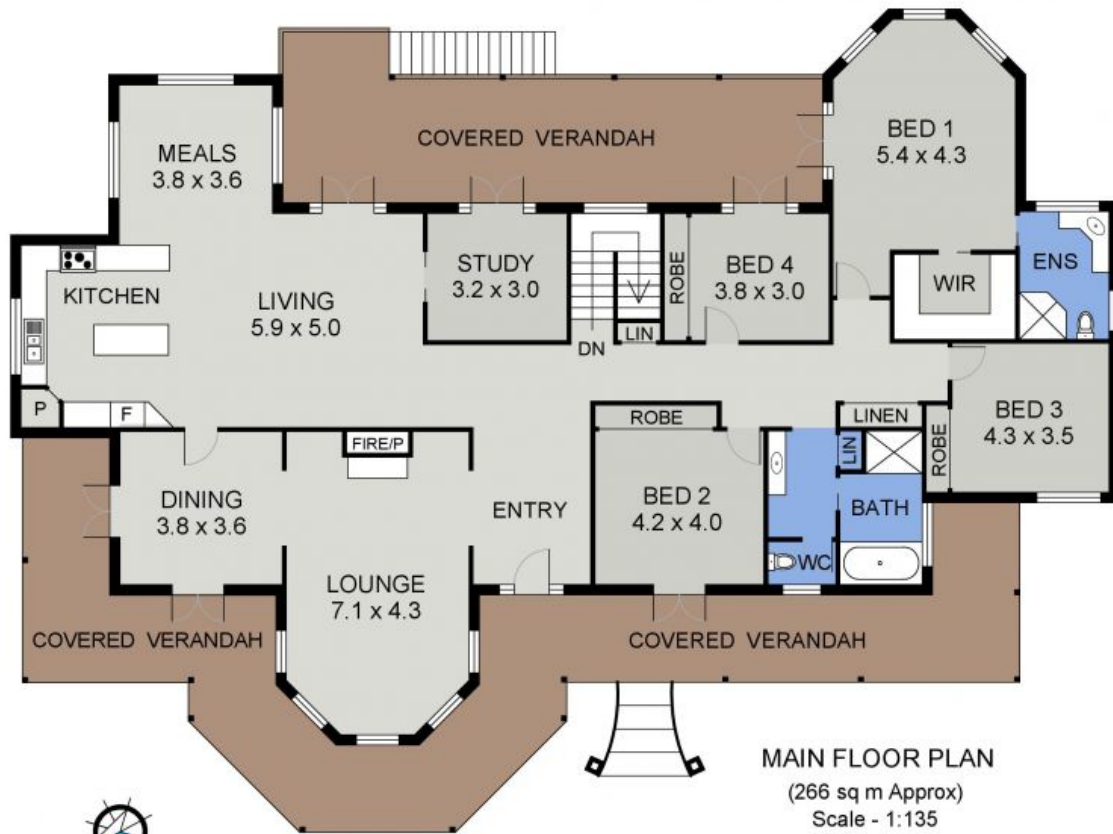
PERCIVAL
PROPERTY

Martin Newell

0429 883 488

Martin Newell

0429 883 488



31 KOREE ISLAND RD
BEECHWOOD