



14 Francis Redman Place Hannam Vale, NSW



4



2



4

Luxurious Country Lifestyle Awaits

From the moment you step through the door into the entry, you will be immediately impressed by the quality of the finishes throughout this Soresen and Caldon built home. The modern well equipped kitchen includes stone bench tops and quality appliances such as Meile and a Electrolux steam fan forced oven, which will more than satisfy any chef.

Garaging includes a large double garage with an auto door, which provides internal access to the home.

For more information please contact the Exclusive Agent Martin Newell on 0429 883 488. Note - The Expressions of Interest Program closes 5.00pm 25/2/2021. Vendor invites your offer...

Price: Expression of Interest

Council Rates: \$1,600.00/year (approx)

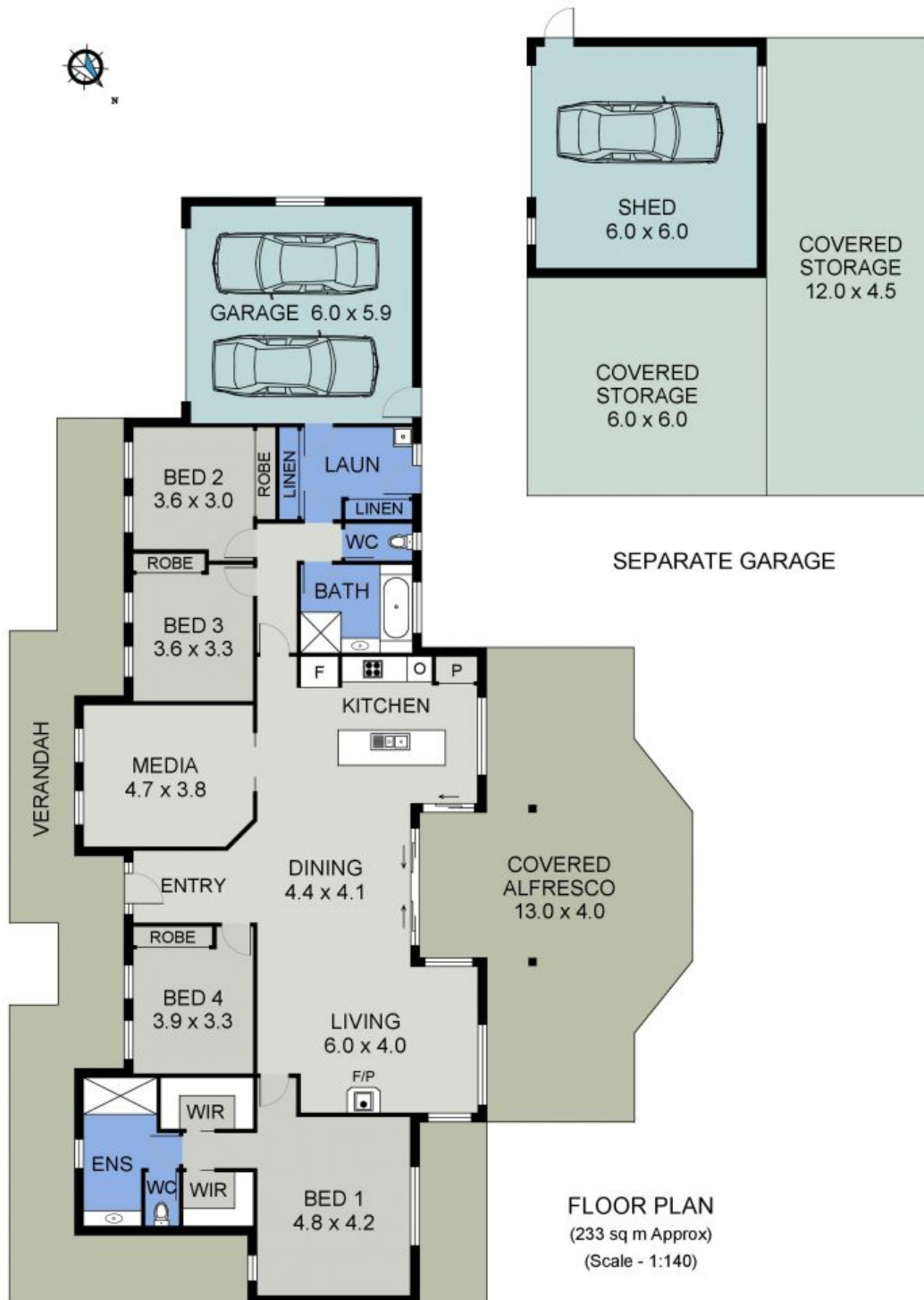
PERCIVAL
PROPERTY

Martin Newell

0429 883 488

Martin Newell

0429 883 488



14 FRANCIS REDMAN PLACE
HANNAM VALE