



Lorne, NSW



4



3



4

Exceptional Country Home on 51 Acres

Located a short 35 minute drive from Port Macquarie and 20 minutes from the seaside township of Laurieton, Lorne valley always surprises all who travel here with its beauty.

Located in the heart of the valley, just down a country lane is this holding which provides 20.7 hectares or just over 51 acres of lush pastures with small pockets of forest.

Improvements here include a steel framed colonial home, with four bedrooms with built-ins, two studies and two bathrooms. Upon entry you are greeted by a large lounge with hardwood floors and a slow combustion fireplace. A separate dining area connects to a large family sized kitchen with quality stainless steel appliances. The larger of the two studies would be ideal as a media room or perhaps another larger bedroom if needed. Wide verandas on three sides enjoy outstanding views over the property and beyond throughout the valley below. The environmental considerations of the colonial design will maintain your comfort thro...

Price: Under Offer

Council Rates: \$2,000.00/year (approx)

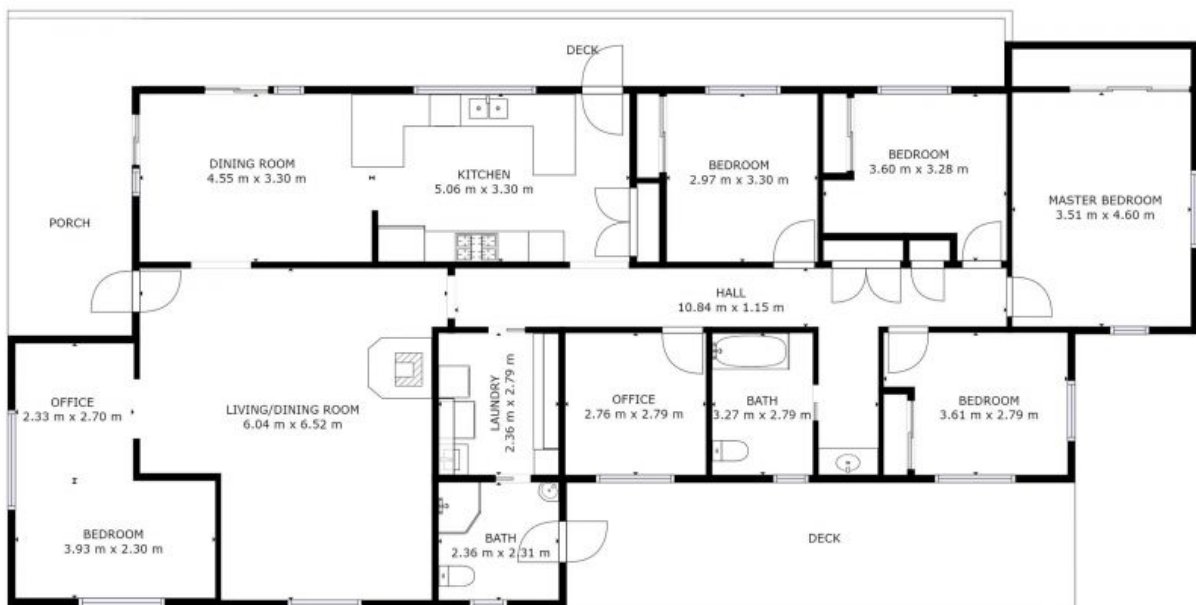
PERCIVAL
PROPERTY

Martin Newell

0429 883 488

Martin Newell

0429 883 488



GROSS INTERNAL AREA
FLOOR 1: 183 m²
TOTAL: 183 m²

SIZES AND DIMENSIONS ARE APPROXIMATE, ACTUAL MAY VARY

28 NEILSON LANE, LORNE 2439

Lorne, NSW