

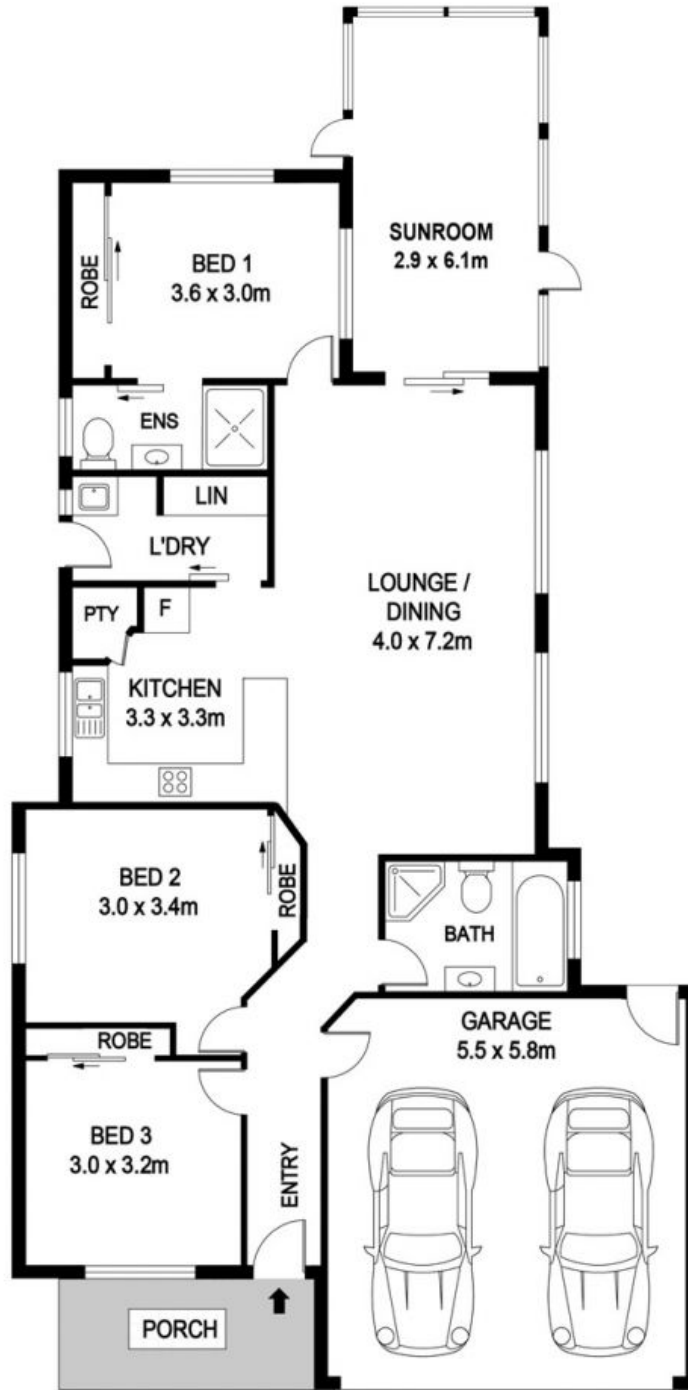


14 Carriage Way Port Macquarie, NSW



QUIETLY POSITIONED CLOSE TO
UNIVERSITY AND HOSPITAL.

Price: \$495 per week



14 Carriage Way, Port Macquarie

INTERNAL : 141.5m²

DISCLAIMER

PLANS SHOWN ARE FOR MARKETING PURPOSES ONLY, ALL DIMENSIONS ARE APPROXIMATE AND NOT TO SCALE. THEY ARE SUBJECT TO ERRORS AND INACCURACIES AND NO LIABILITY WILL BE ACCEPTED. INTERESTED PARTIES SHOULD MAKE THEIR OWN INQUIRES.