



16 Partridge Street Port Macquarie, NSW



4



2



2

Ocean Views - Lighthouse Beach - 5 Min Walk to Beach

Set a few minutes walk from the sand and surf, and with cafes, restaurants and local shopping 110m from your door, a Lighthouse lifestyle epitomises everything you seek in coastal living.

Enjoy being a brief stroll from the local surf club, the highly regarded Tacking Point Public School, local post office and medical centre, while child care, supermarket, tavern, two golf courses and other schooling options are all less than a 10 minute drive from your door.

Designed for ease of living and situated for a lifestyle of convenience, 16 Partridge Street, Port Macquarie is a rare commodity.

A free flowing floor plan takes you from the spacious formal lounge, through to the formal...

Price:

Auction - Offers Welcome Prior

Council Rates: \$3,500.00/year (approx)

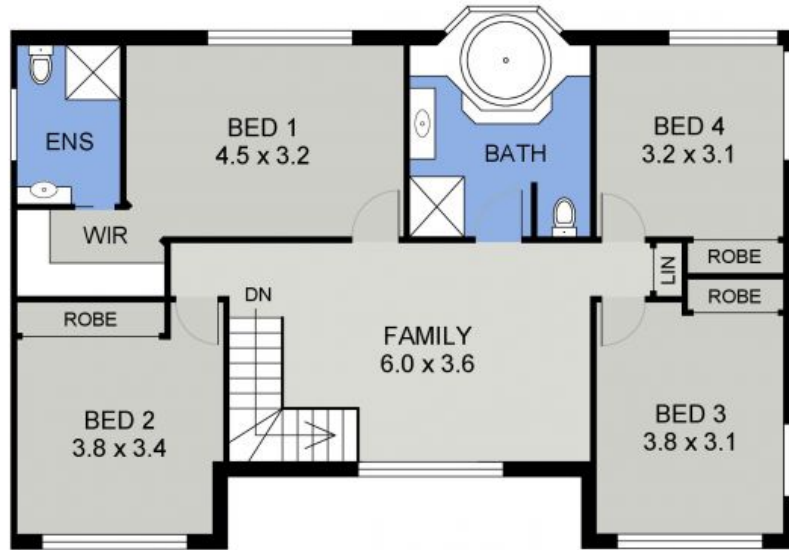
PERCIVAL
PROPERTY

Michelle Percival

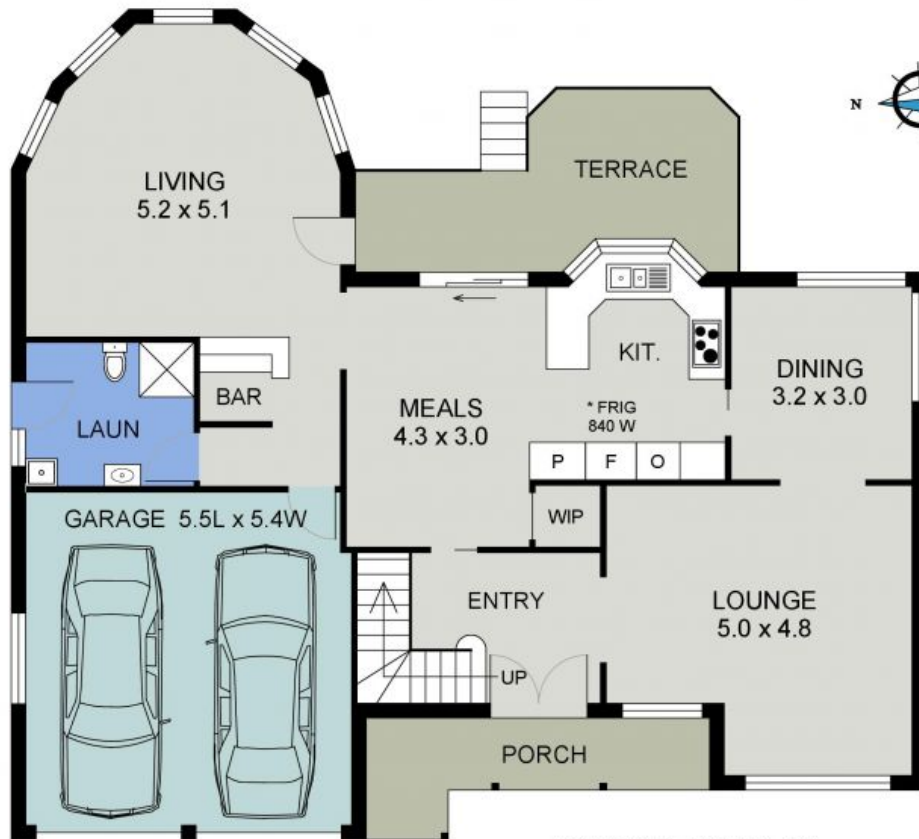
0404 466 500

Michelle Percival

0404 466 500



UPPER FLOOR PLAN
(105 sq m Approx)



LOWER FLOOR PLAN
(150 sq m Approx)
Scale - 1:95

16 PARTRIDGE STREET
PORT MACQUARIE