

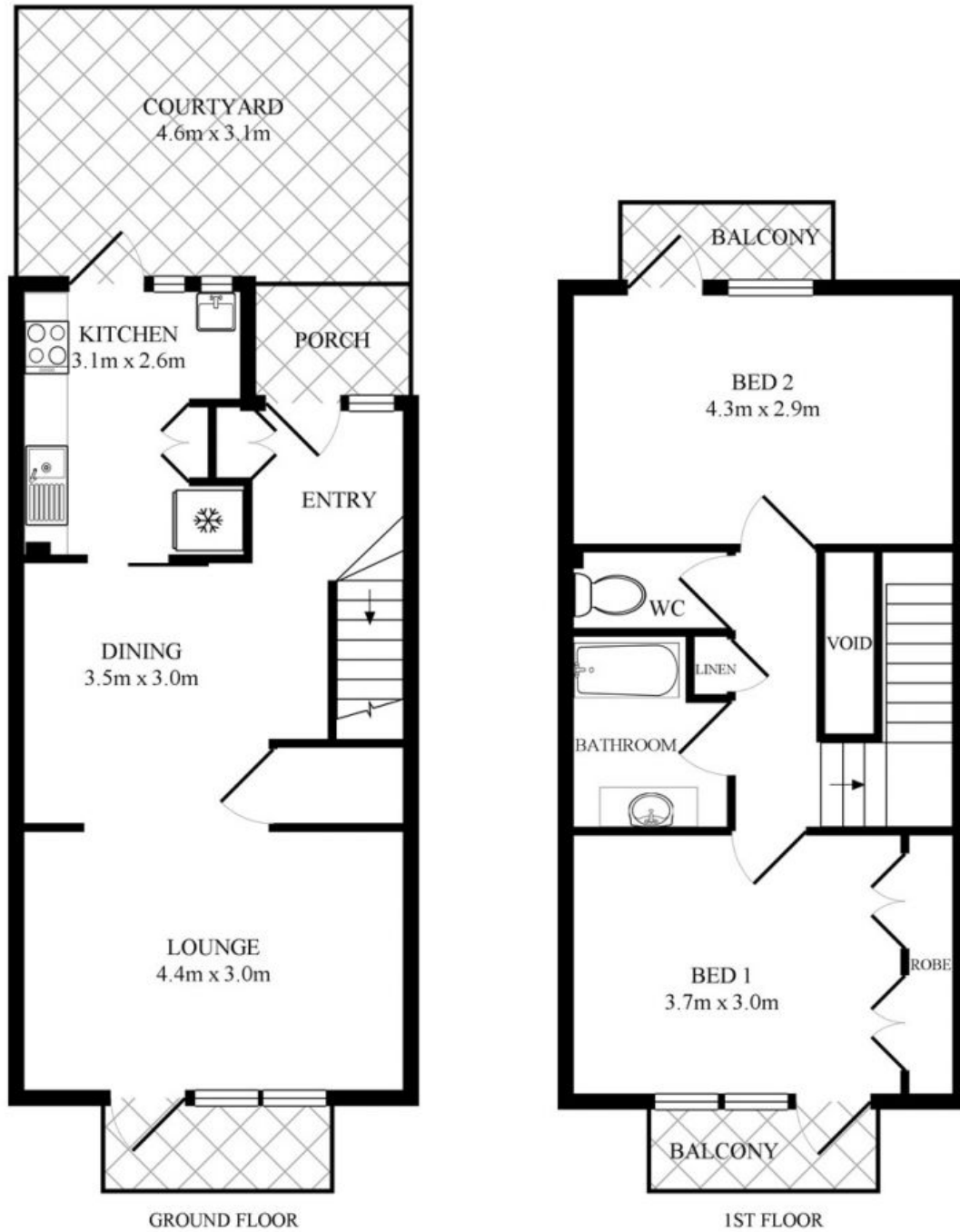


34/21 Park Street Port Macquarie, NSW

 2  1  1

Amazing Central Location!

Price: \$390 per week



TOTAL APPROX. FLOOR AREA 77.7 SQ.M. (836 SQ.FT.)

This plan is for illustrative purposes only and dimensions are approximate.

34/21-29 Park St, Port Macquarie

