



4/118 Pacific Drive Port Macquarie, NSW



3



2



2

Contemporary Beachside Townhouse - Shelly Beach

With an outlook from indoor and outdoor living that captures the lush rain forest canopy, this divine location places you strolling distance from the sand and surf, popular Rainforest Cafe, convenience shopping and coastal walks.

Designed to optimise light and space, a large and inviting contemporary townhouse is uniquely placed within a boutique complex. Its generous walled garden adds to the amenity of an expansive open plan layout on the lower level.

Accommodation is indulgent; the king-size master with ensuite and step-in robe offers a large covered balcony where cooling sea breezes offer comfortable respite at the end of a su...

Price: Guide \$770,000-\$810,000

Council Rates: \$2,365.00/year (approx)

Strata Rates: \$900.00/year (approx)



Michelle Percival

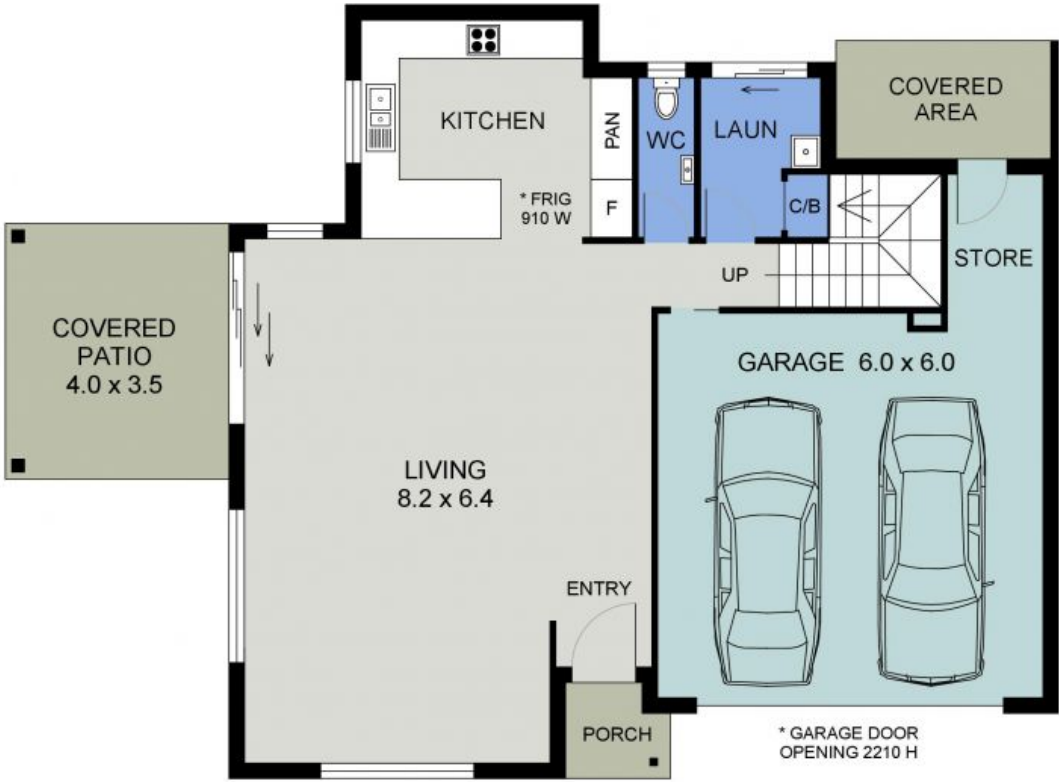
0404 466 500

Ally Downing

0417 929 726



UPPER FLOOR PLAN
(83 sq m Approx)



LOWER FLOOR PLAN
(129 sq m Approx)
Scale - 1:90

4/118 PACIFIC DRIVE
PORT MACQUARIE