



160 Ocean Drive Kew, NSW



4



3



2

Magnificent Home - Extra Accommodation - 1.8 Acres (7398 sqm)

This beautifully presented small acreage property is situated on a lovely near level 7398 sqm (1.8 acre) block, close to Queens Lake and the coastlines beaches, plus only minutes from the conveniences of Laurieton and the Lakewood shopping centre.

The newly upgraded driveway leads you through the beautifully presented gardens and parklike grounds to the privately position main residence, granny flat plus detached double garage.

This homes floorplan is ideal for those who like to entertain, with the family and dining area flowing through to a substantial lounge room and onward to a large outdoor entertainment area. The main lounge is a real feature of this home and offers the sense of space thr...

Price: Guide \$875,000-\$925,000

Council Rates: \$1,850.00/year (approx)

PERCIVAL
PROPERTY

Martin Newell

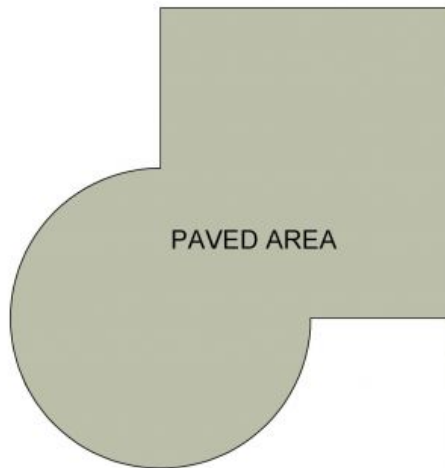
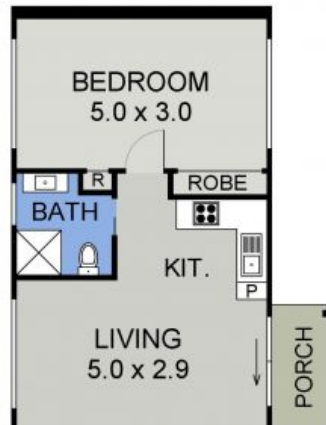
0429 883 488

Martin Newell

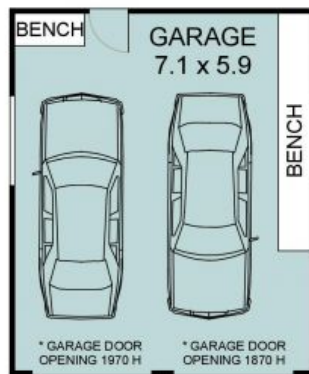
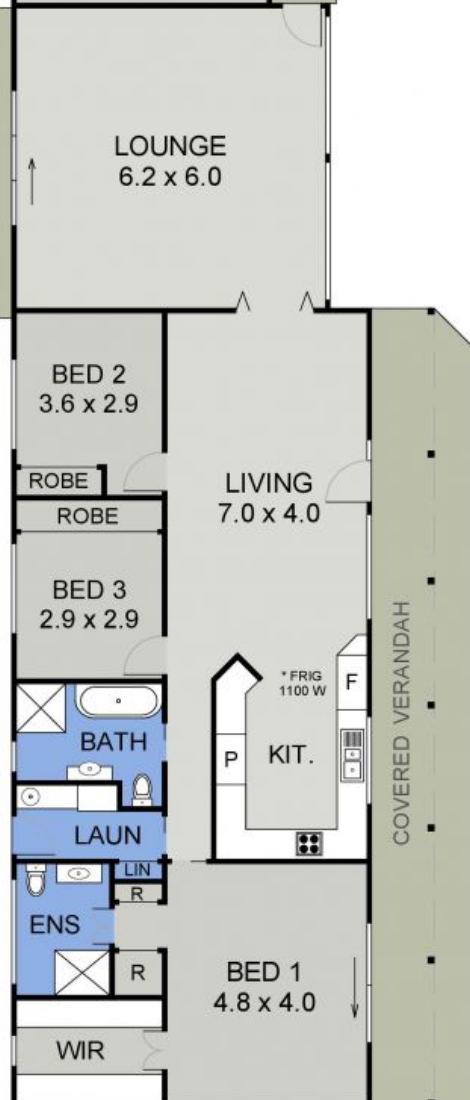
0429 883 488



**GRANNY FLAT
FLOOR PLAN**
(44 sq m Approx)



MAIN FLOOR PLAN
(153 sq m Approx)
Scale - 1:115



SEPARATE GARAGE

160 OCEAN DRIVE
KEW