



816/40 William Street Port Macquarie, NSW



'The Observatory' Luxe Apartment Living - Footsteps from Town Beach

Enviably positioned just a few minute's walk from Port Macquarie's Town Beach, this contemporary apartment forms a part of the award winning 'The Observatory' complex.

Situated on Church Street with a treed outlook and wide street aspect, you will enjoy the benefits of full resort facilities and through access to William Street and the beach beyond.

Restaurants and cafes will tantalise the tastebuds, while a walk along Town Beach and the breakwall will be food for the soul!

When it is rest and relaxation you require, retire to your contemporary apartment where finishes enhance the function and flow of a single level floor plan incorporating a designat...

Price: Guide \$595,000-\$625,000

Council Rates: \$1,760.00/year (approx)

Strata Rates: \$1,362.07 p/q

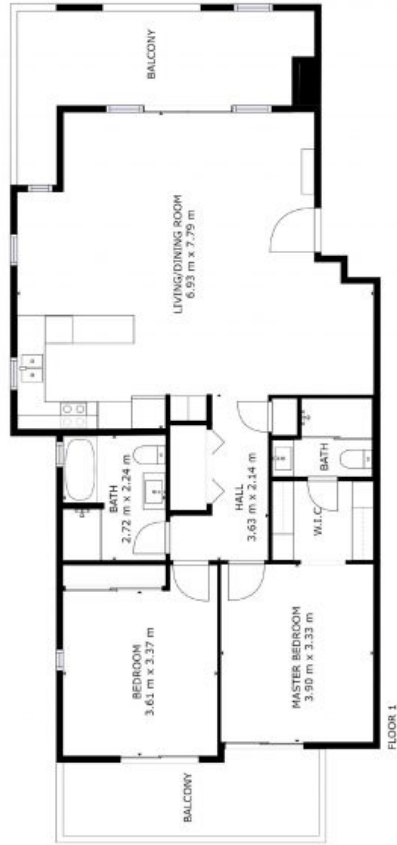


Michelle Percival

0404 466 500

Ally Downing

0417 929 726



816/40 William St, Port Macquarie