



15/1 Clarence Street Port Macquarie, NSW



2



1



1

Cosmopolitan living in the heart of Port Macquarie!

The ultra modern CBD pad in a walk-to-everywhere location, is perfect for owner-occupiers or investors.

Not an inch was untouched during the reno, with on trend interiors creating the perfect low maintenance lifestyle.

Timber look flooring provides flow from the entry to the open plan living area incorporating dining and a contemporary kitchen with electric cooking and provision for a dishwasher.

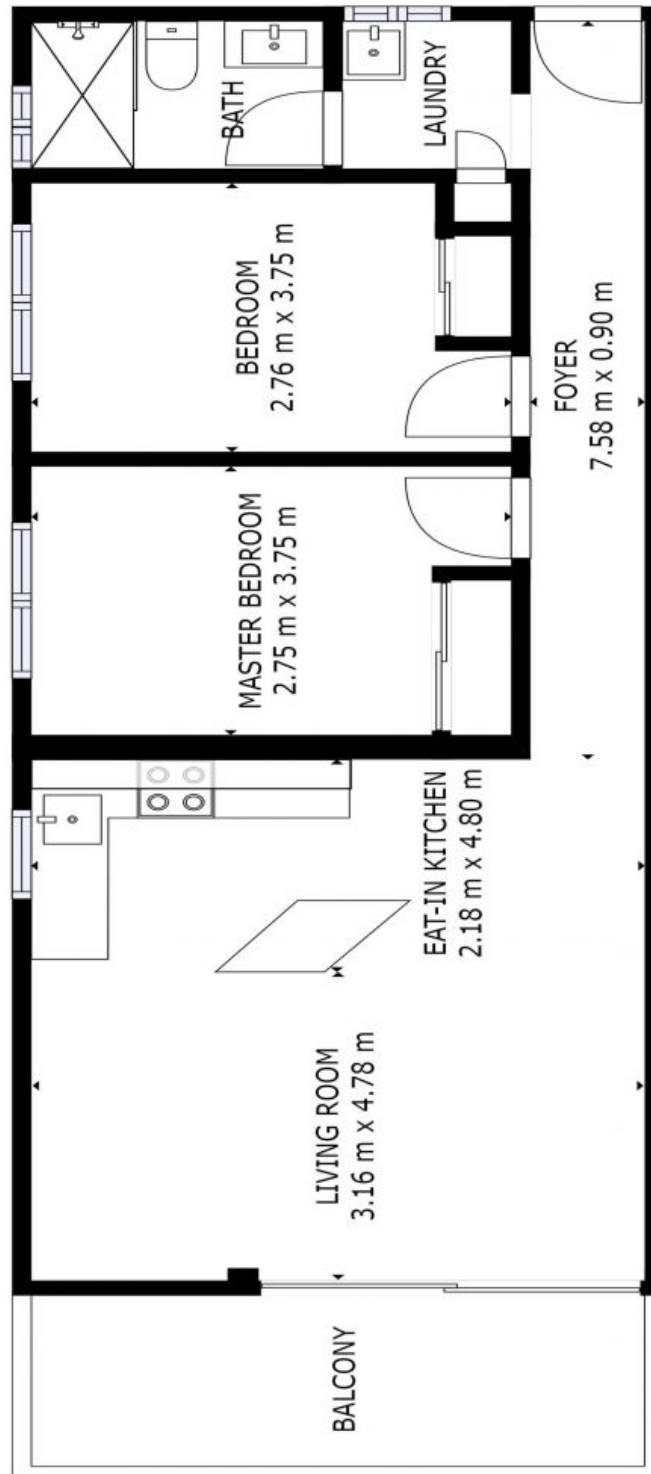
Set within the dining and cultural hub, surrounded by shopping precincts and quirky boutiq...

Price: Guide \$420,000-\$450,000

Council Rates: \$2,200.00/year (approx)

Water Rates: \$84.00 p/q

Strata Rates: \$609.00 p/q



TOTAL: 62 m²
SIZES AND DIMENSIONS ARE APPROXIMATE, ACTUAL MAY VARY.

1/15 Clarence Street, Port Macquarie