



813 Hannam Vale Road Stewarts River, NSW



4



3



6

Exceptional Country Home with Mountain Vistas (13.89 Ha / 34.3 acres)

Entering the properties tree lined driveway you realise that you have indeed arrived at a very special property as you are greeted by a magnificent colonial styled home.

Before entering the home your vision is drawn to the outstanding rural views to the east, which include Middle Brother Mountain and the peak of South Brother Mountain.

The property itself consists of 13.89 ha / 34.3 acres, with approximately 5 ha / 12 acres ...

Price: \$1,100,000

Council Rates: \$2,200.00/year (approx)

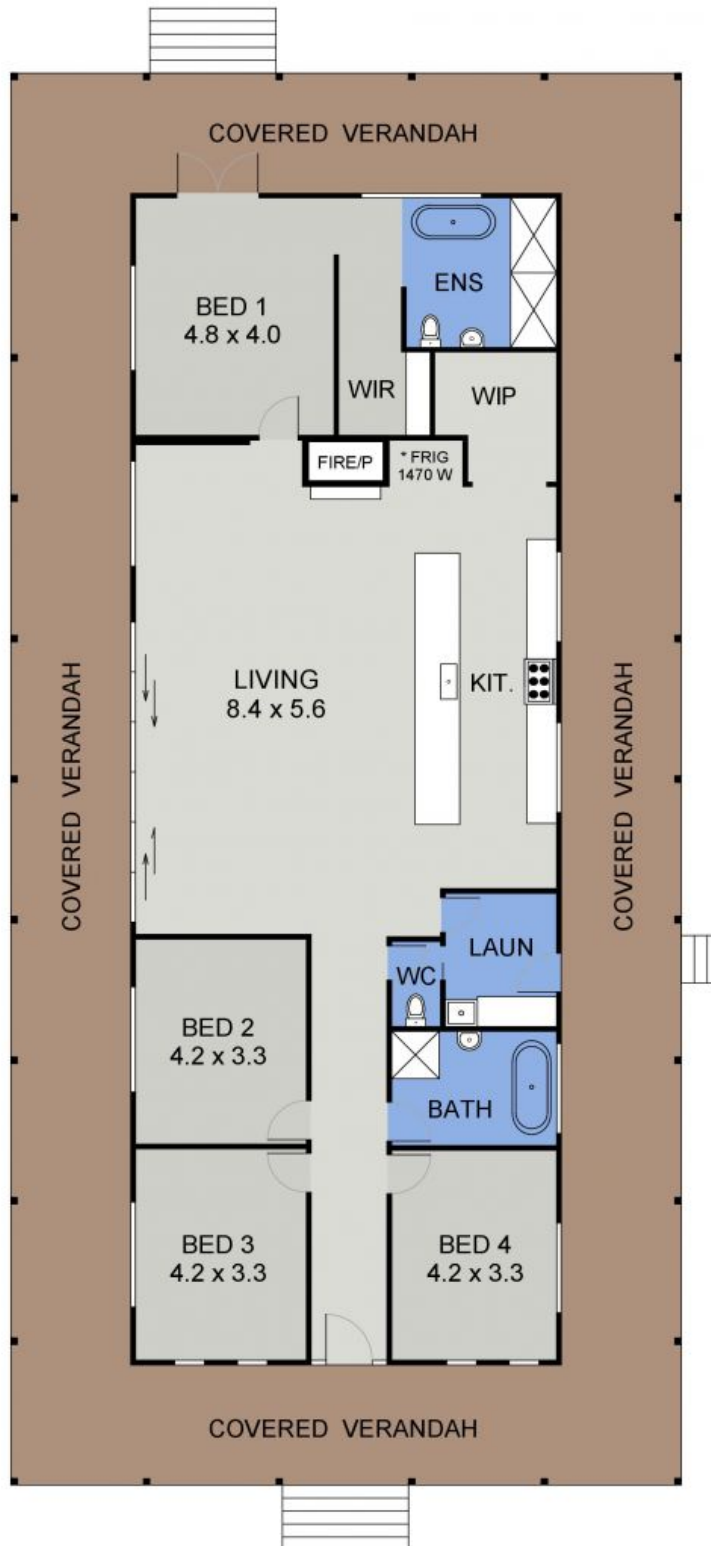
PERCIVAL
PROPERTY

Martin Newell

0429 883 488

Martin Newell

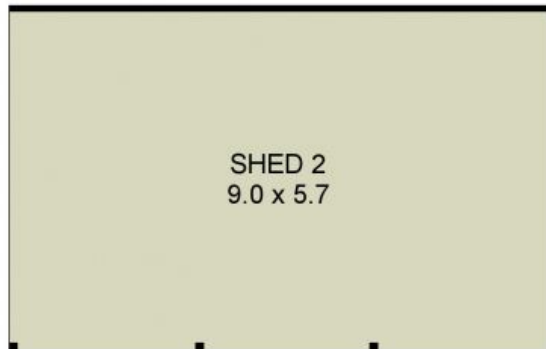
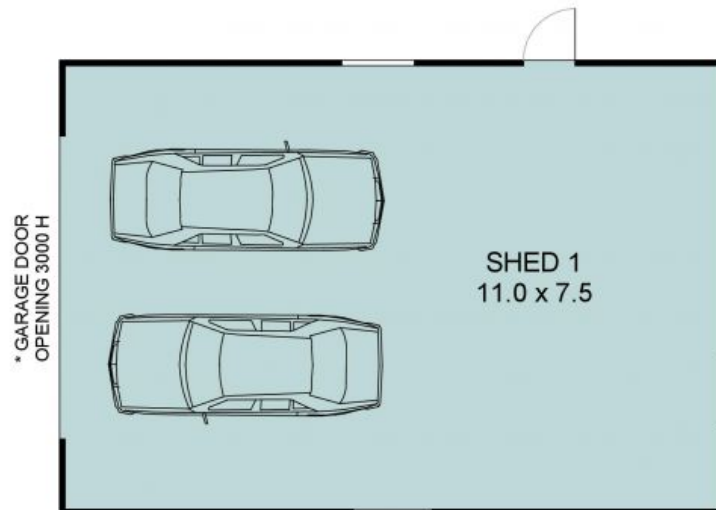
0429 883 488



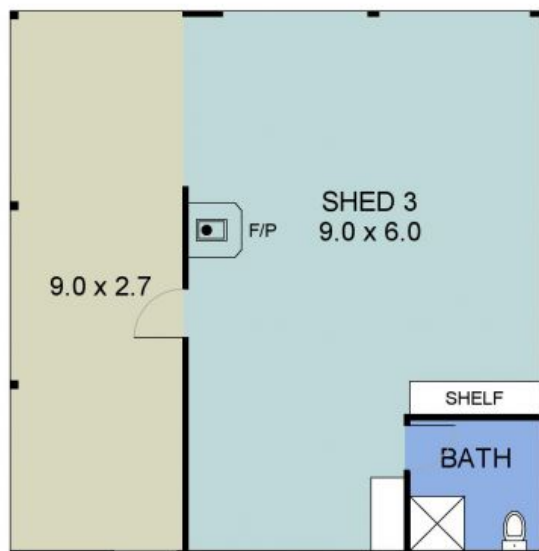
FLOOR PLAN
(202 sq m Approx)
Scale - 1:115

813 HANNAM VALE ROAD
STEWARTS RIVER

SHED 1 PLAN



SHED 2 PLAN
Scale - 1:95



SHED 3 PLAN

813 HANNAM VALE ROAD
STEWARTS RIVER