

10 Syd Hopkins Terrace Port Macquarie, NSW

 4
  2
  2

Designer Detail - Intuitive Family Living

A bespoke floor plan provides wide hallways, large living zones and abundant natural light enhancing the sense of space and lifestyle.

The formal lounge and king size master suite with ensuite and walk-in robe enjoy separation from the hub of the home and family wing.

Central to the layout, the expansive open plan living room incorporates a study nook, living, dining and contemporary kitchen with benchtop cooking, dishwasher and pantry storage.

A seamless transition to outdoor living leads to a covered entertaining patio overlooking the low maintenance, landscaped rear yard.

Distinctive elements that set this home apart from the rest... data cabling throughout the...

Price: Auction - Offers Welcome Prior

Council Rates: \$2,680.00/year (approx)

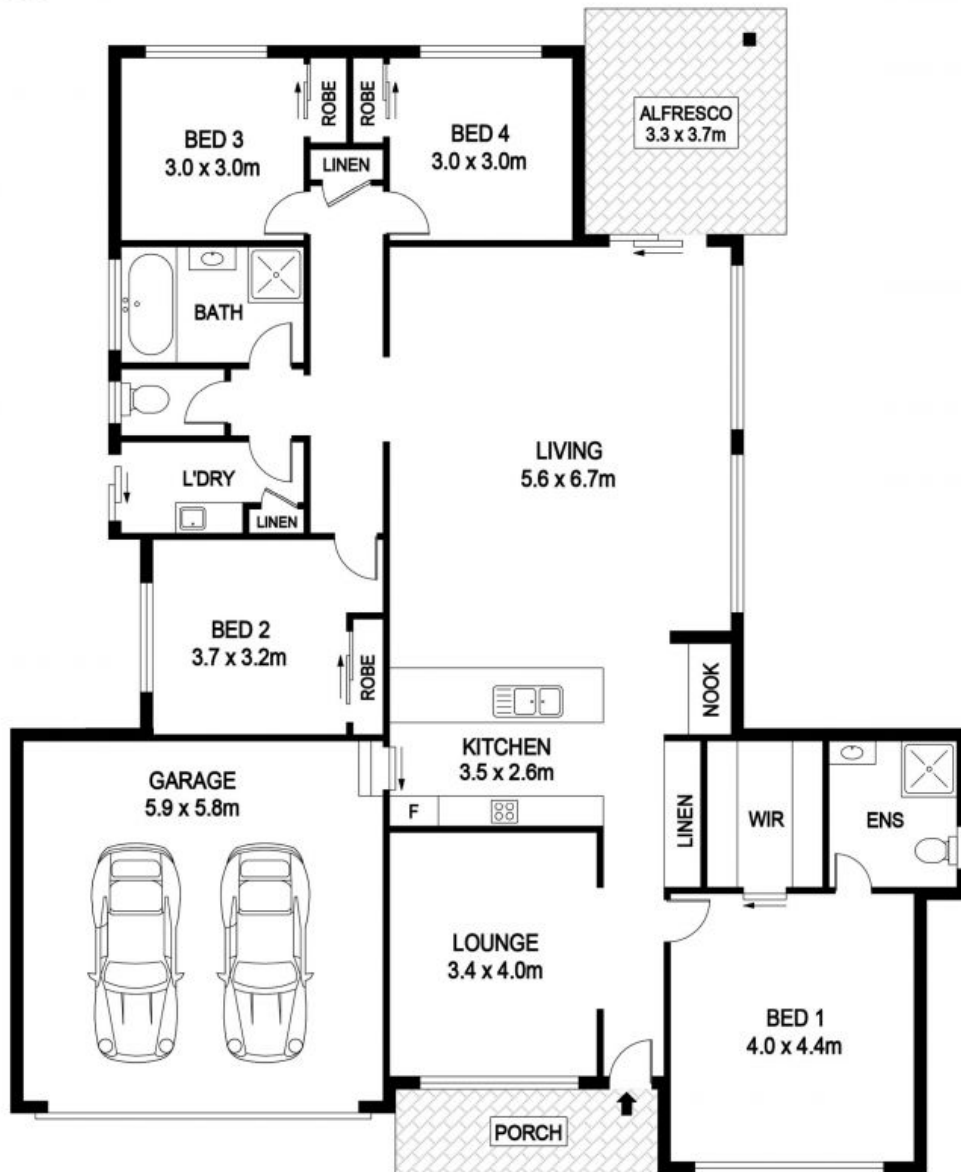
PERCIVAL
PROPERTY

Michelle Percival

0404 466 500

Ally Downing

0418 392 756



10 Syd Hopkins Dr, Port Macquarie

INTERNAL : 158.0 m²
GARAGE : 34.2 m²

DISCLAIMER

PLANS SHOWN ARE FOR MARKETING PURPOSES ONLY, ALL DIMENSIONS ARE APPROXIMATE AND NOT TO SCALE. THEY ARE SUBJECT TO ERRORS AND INACCURACIES AND NO LIABILITY WILL BE ACCEPTED. INTERESTED PARTIES SHOULD MAKE THEIR OWN INQUIRIES.

PERCIVAL
PROPERTY

10 Syd Hopkins Terrace

Port Macquarie, NSW

PERCIVAL
PROPERTY