



Stewarts River, NSW



Exclusive Preview ? A Rural lifestyle Awaits - 20 Acres / 8.094 Ha

Improvements to the property include a renovated well presented four bedroom Australian ranch style home, which offers a large lounge and dining area with a slow combustion fireplace, plus a separate meals area adjoining a modern well equipped kitchen. All bedrooms enjoy outstanding rural vistas over the grounds of the property. The home has a wide wrap around verandah on all sides, which overlooks the surrounding lawns and gardens, which are mature and provide excellent shade areas and outstanding privacy.

The land includes 19.85 acres of lush highly fertile arable ground (formerly a highly productive Kiwi fruit orchard) with an area still under lemon myrtle production. The property is framed by highset Pine trees, offering excellent protection to cattle / horses or any cropping from the elements. Water security is also excellent with a large dam, which is con...

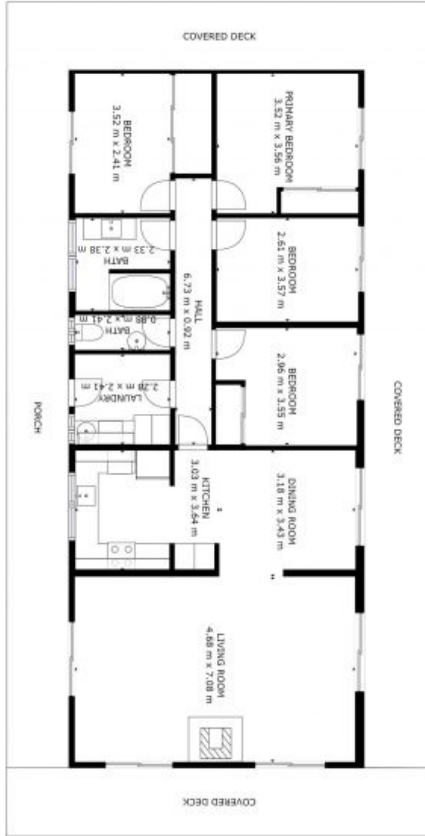
Price: Expression of Interest

Council Rates: \$2,400.00/year (approx)



Martin Newell

0429 883 488



540 JERUSALEM ROAD, STEWARTS RIVER

60/62 JERUSALEM RD,
STEWARTS RIVER, NSW
TOTAL 1,114 m²
LAND 1,114 m²
GROSS INTERNAL AREA
1,114 m²
PERCIVAL PROPERTY