



50/58 Pacific Drive Port Macquarie, NSW



2



1



1

Ocean Views & Beachside Location

A renovated two bedroom apartment offers so much potential for lifestyle or investment with ocean views from living, the master bedroom and a covered balcony.

Located a two minute walk from the sand and surf at beautiful Flynn's Beach, neighbourhood shops, cafes and restaurants, don't just dip your toe - dive right into coastal living.

A charismatic precinct strolling distance to multiple beaches on one of the Mid North Coast's most stunning coastal walking trails, enjoy the laid back lifestyle and watch the passing parade of migrating whales from your lounge.

Spacious open plan living and dining flows directly onto the alfresco entertaining patio w...

Price: Guide \$550,000-\$600,000

Council Rates: \$1,910.00/year (approx)

Strata Rates: \$943.45 p/q

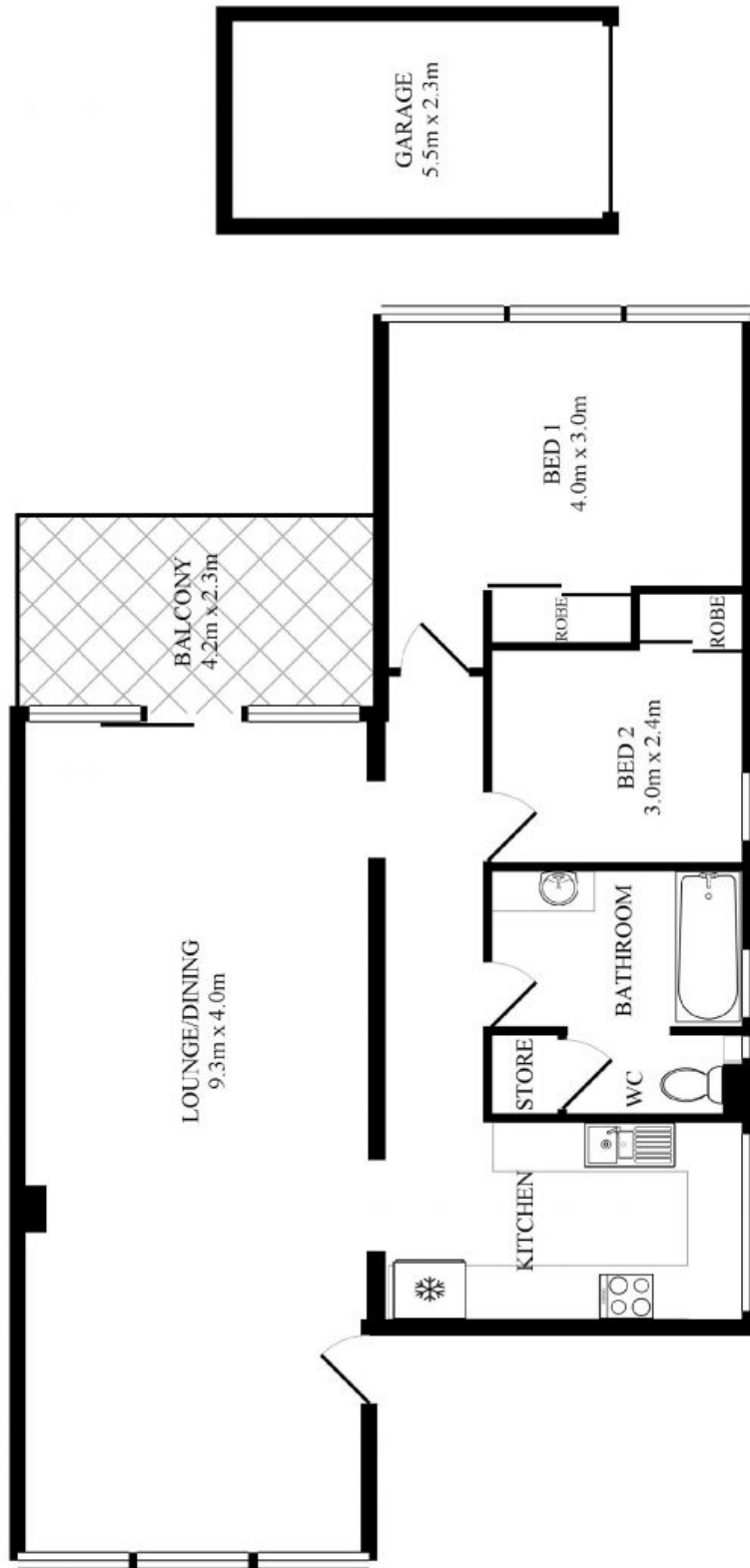


Ally Downing

0418 392 756

Ally Downing

0418 392 756



TOTAL APPROX. FLOOR AREA 90.7 SQ.M. (977 SQ.FT.)

This plan is for illustrative purposes only and dimensions are approximate.