

5/192 Matthew Flinders Drive Port Macquarie, NSW

3 2 1

Lighthouse Beach Townhouse Five Minutes' Walk from the Surf

Residing in a tightly held complex, and updated for lifestyle, this home delivers contemporary living with character, great privacy with generous proportions.

Ambient spaces provide flow from indoors to out with light filled living opening onto a sensationally private entertainers' deck to perfectly indulge downtime and the demands of our busy modern lifestyles.

Designed to accommodate everyday living with absolute ease, this low-maintenance home represents a superb coastal retreat.

The upper level accommodates a main bedroom with balcony, built-in robes and ensuite, while two additional bedrooms with built-ins are serviced by a master bathroom with both showe...

Price: Guide \$650,000-\$695,000

Council Rates: \$2,100.00/year (approx)

Strata Rates: \$685.71 p/q

PERCIVAL
PROPERTY

Michelle Percival

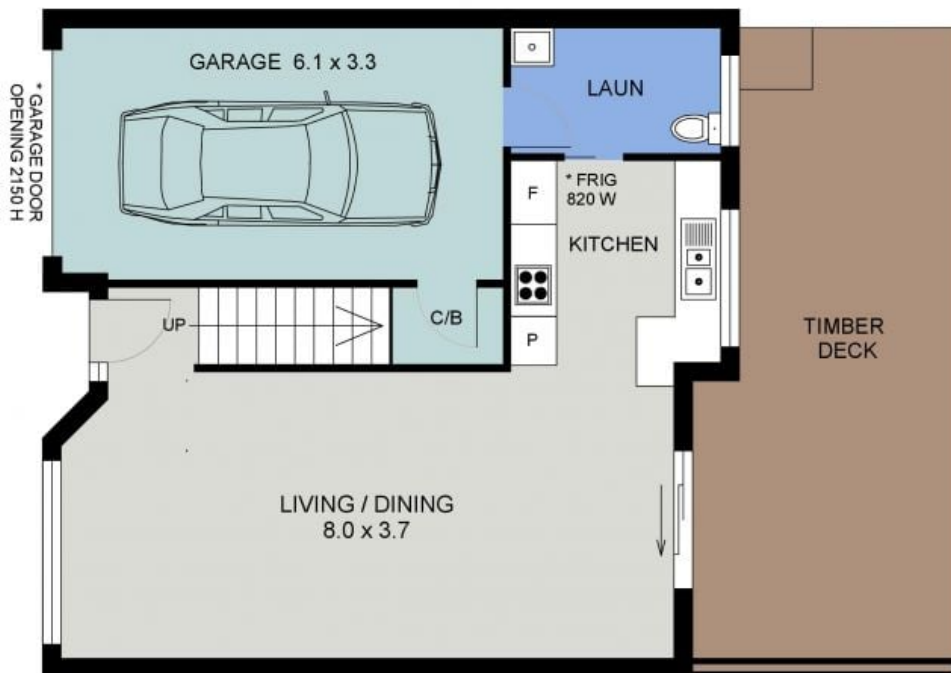
0404 466 500

Ally Downing

0418 392 756



UPPER FLOOR PLAN
(67 sq m Approx)



LOWER FLOOR PLAN
(72 sq m Approx)
Scale - 1:75

5/192 MATTHEW FLINDERS DR
PORT MACQUARIE