



7 Quarry Rise Port Macquarie, NSW

 6

 3

 4

SPACE FOR THE WHOLE FAMILY!

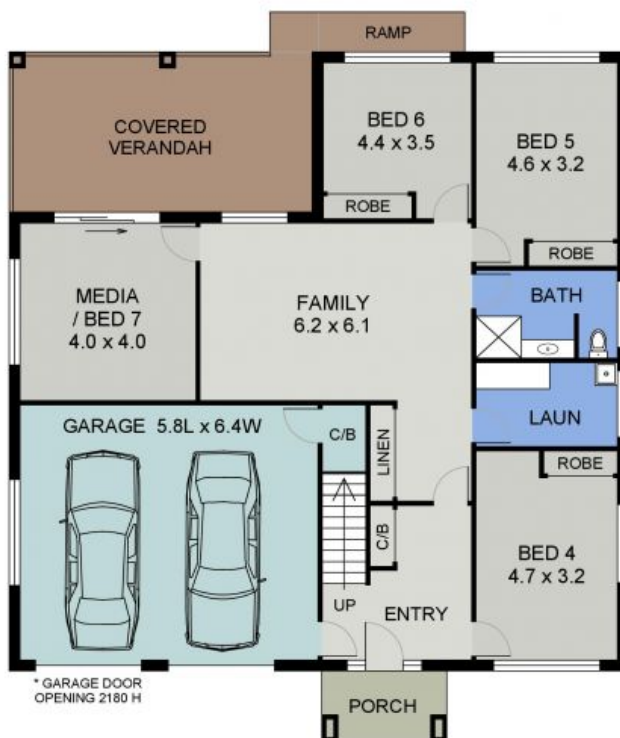
Price: \$810 per week



UPPER FLOOR PLAN  
(171 sq m Approx)



LOWER FLOOR PLAN  
(72 sq m Approx)  
Scale - 1:130



MID FLOOR PLAN  
(171 sq m Approx)

\* GARAGE DOOR  
OPENING 2180 H



SEPARATE CARPORT

7 QUARRY RISE  
PORT MACQUARIE