



12 Campus Street Thrumster, NSW



Stylish & Contemporary Level Living Home

An open plan layout incorporates a sun washed living/dining area with desirable flow onto an outdoor patio, perfect for entertaining and relaxation.

A sleek kitchen with muted palette and timeless appeal is appointed with stone benchtops and complemented by electric cooking, pantry storage and dishwasher.

Well proportioned bedrooms and a light filled master with walk-in robe and designer ensuite enjoy the seasonal comfort of ceiling fans.

Side access to parking perfect for a trailer/camper is a bonus!

Sovereign Hills is quickly becoming one of Port Macquarie's newest lifestyle destinations....

Price: Guide \$550,000-\$600,000

Council Rates: \$2,300.00/year (approx)

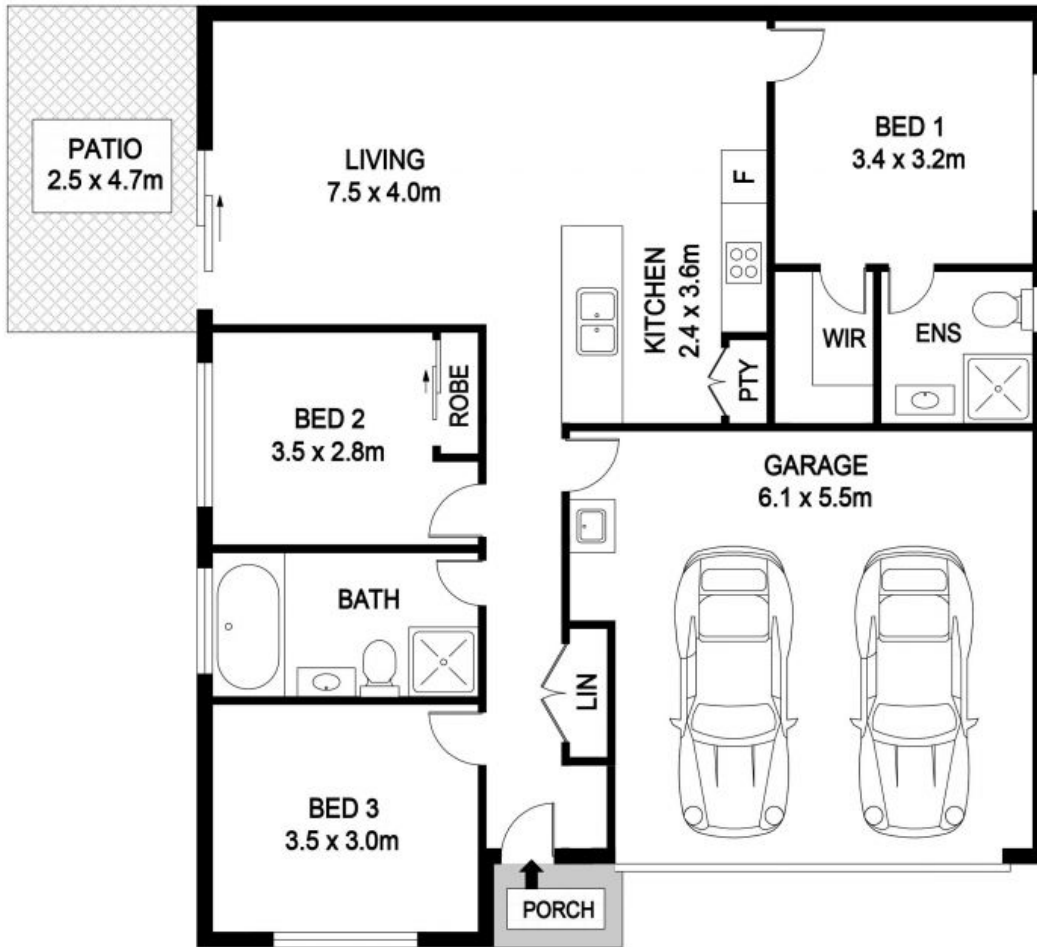


Michelle Percival

0404 466 500

Ally Downing

0417 929 726



12 Campus St, Port Macquarie

INTERNAL : 121.6m²
PATIO : 11.7m²

DISCLAIMER

PLANS SHOWN ARE FOR MARKETING PURPOSES ONLY, ALL DIMENSIONS ARE APPROXIMATE AND NOT TO SCALE. THEY ARE SUBJECT TO ERRORS AND INACCURACIES AND NO LIABILITY WILL BE ACCEPTED. INTERESTED PARTIES SHOULD MAKE THEIR OWN INQUIRES.