



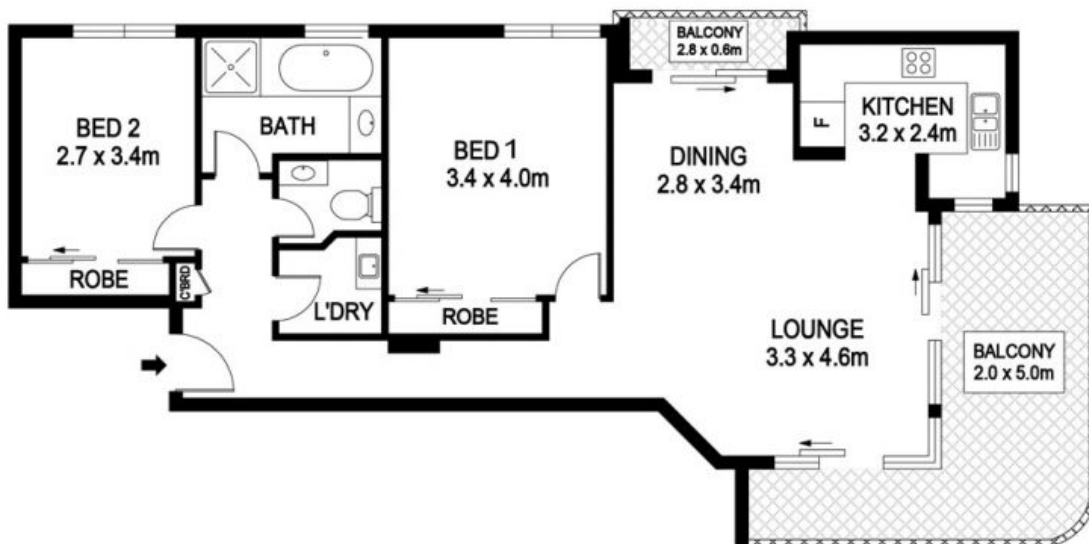
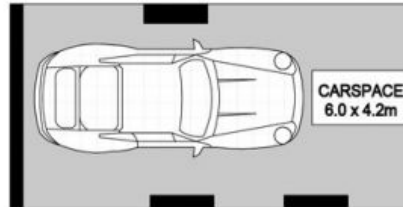
601/8-10 Hollingworth Street Port Macquarie, NSW



**FRESH AND FABULOUS!**

Sorry no pets.

**Price:** \$495 per week



601/8-10 Hollingworth St, Port Macquarie

INTERNAL : 78.8m<sup>2</sup>  
BALCONY : 16.4m<sup>2</sup>  
CARPORT : 25.2m<sup>2</sup>

**DISCLAIMER**

PLANS SHOWN ARE FOR MARKETING PURPOSES ONLY, ALL DIMENSIONS ARE APPROXIMATE AND NOT TO SCALE. THEY ARE SUBJECT TO ERRORS AND INACCURACIES AND NO LIABILITY WILL BE ACCEPTED. INTERESTED PARTIES SHOULD MAKE THEIR OWN INQUIRES.