



39 Shoreline Drive North Shore, NSW



The North Shore Of Port Macquarie

Nestled amongst a native Australian backdrop, the Hastings River and surrounded by well-presented homes. If you are looking to escape the hustle and bustle of the city and still have all desirable amenities on your door step - You can't look past this address.

Boasting an updated chic design with renovated internals and all of the comforts of living in the country but only moments away from the Port Macquarie CBD. The kids have plenty of room to play, the chickens have plenty of room to roam and Dad has plenty of room to store his toys.

Think about evening nightcaps on the back deck watching the sunset, winters by the indoor fire place and holiday seasons entertaining the family at your place.

Ideal as a holiday management investment, book out your family holidays and make an income...

Price: Auction Guide \$700,000 - \$750,000

Council Rates: \$2,550.00/year (approx)



Ayla Bailey

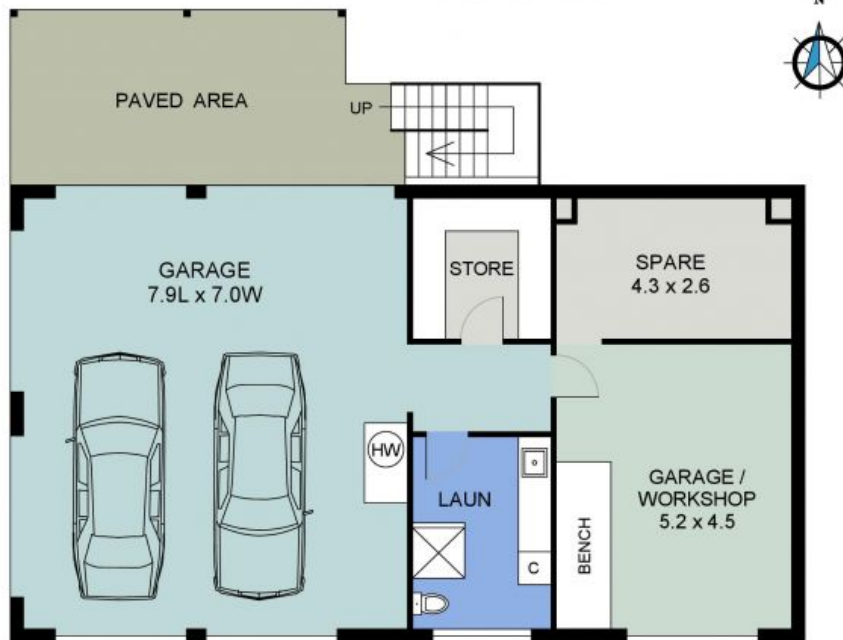
0431 194 876

Ayla Bailey

0431 194 876



MAIN FLOOR PLAN
(121 sq m Approx)



LOWER FLOOR PLAN
(121 sq m Approx)
Scale - 1:105

39 SHORELINE DRIVE
NORTH SHORE