



102 Owen Street Port Macquarie, NSW



### East Port - 600m From the Surf - Walk to CBD Location

Set just nine minutes' walk from the surf at Port Macquarie's family favoured Flynn's Beach, this is unquestionably an exceptional opportunity to acquire a slice of heaven with natural rainforest outlook.

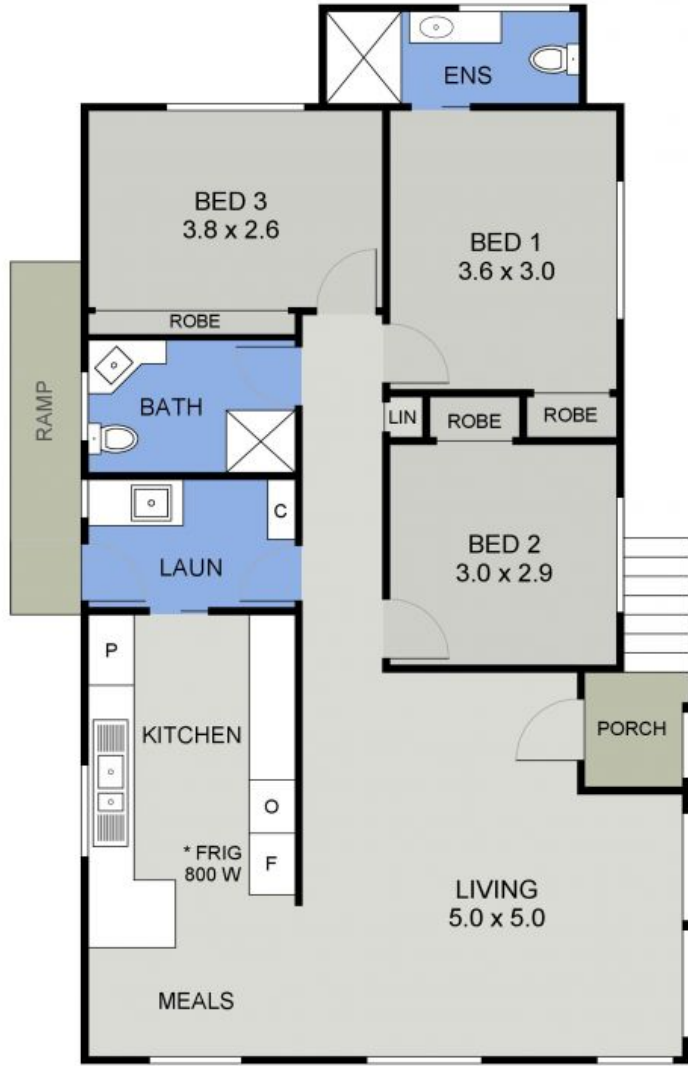
Just moments from your door are a selection of cafes and restaurants, and the convenience of neighbourhood shopping, medical, post office and transport. Take the stunning coastal walk into the CBD via Town Beach and the Hastings River, or stroll the more direct and mostly level route to the town's hub.

**Price:** \$550 per week



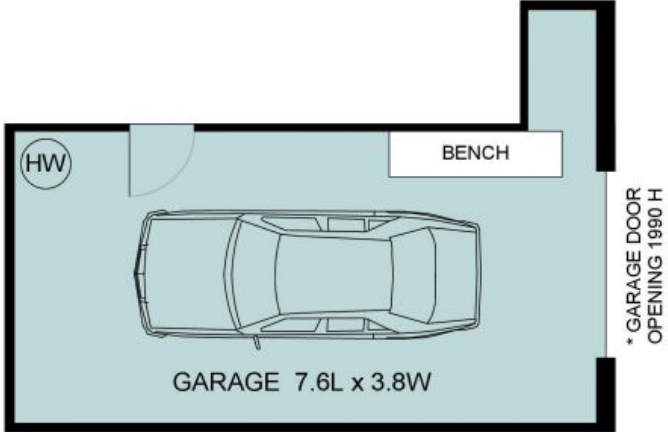
**Michael Percival**  
0404466501

**Yolanda Tobin**  
0418 143 611



**FLOOR PLAN**  
(96 sq m Approx)

**GARAGE UNDER LIVING**  
Scale - 1:85



102 OWEN STREET  
PORT MACQUARIE



**SITE PLAN**  
(512 sq m Approx)  
Scale - 1:130



102 OWEN STREET  
PORT MACQUARIE