



336 Crestwood Drive Port Macquarie, NSW



4



2



2

Family Favoured Location - Minutes from Beaches, Schools & CBD

Combining effortless livability with spacious dimension, this family home makes the most of a setting embraced by established gardens planted for privacy and a tranquil aesthetic.

The free flowing floor plan is as functional as it is designed for comfort with a layout perfectly zoned for families.

The fluid design offers two separate living areas incorporating a spacious lounge room and generous open plan living zone incorporating dining and family room with access to a covered entertaining patio overlooking a verdant garden setting.

Price: Auction - Offers Welcome Prior

Council Rates: \$2,800.00/year (approx)

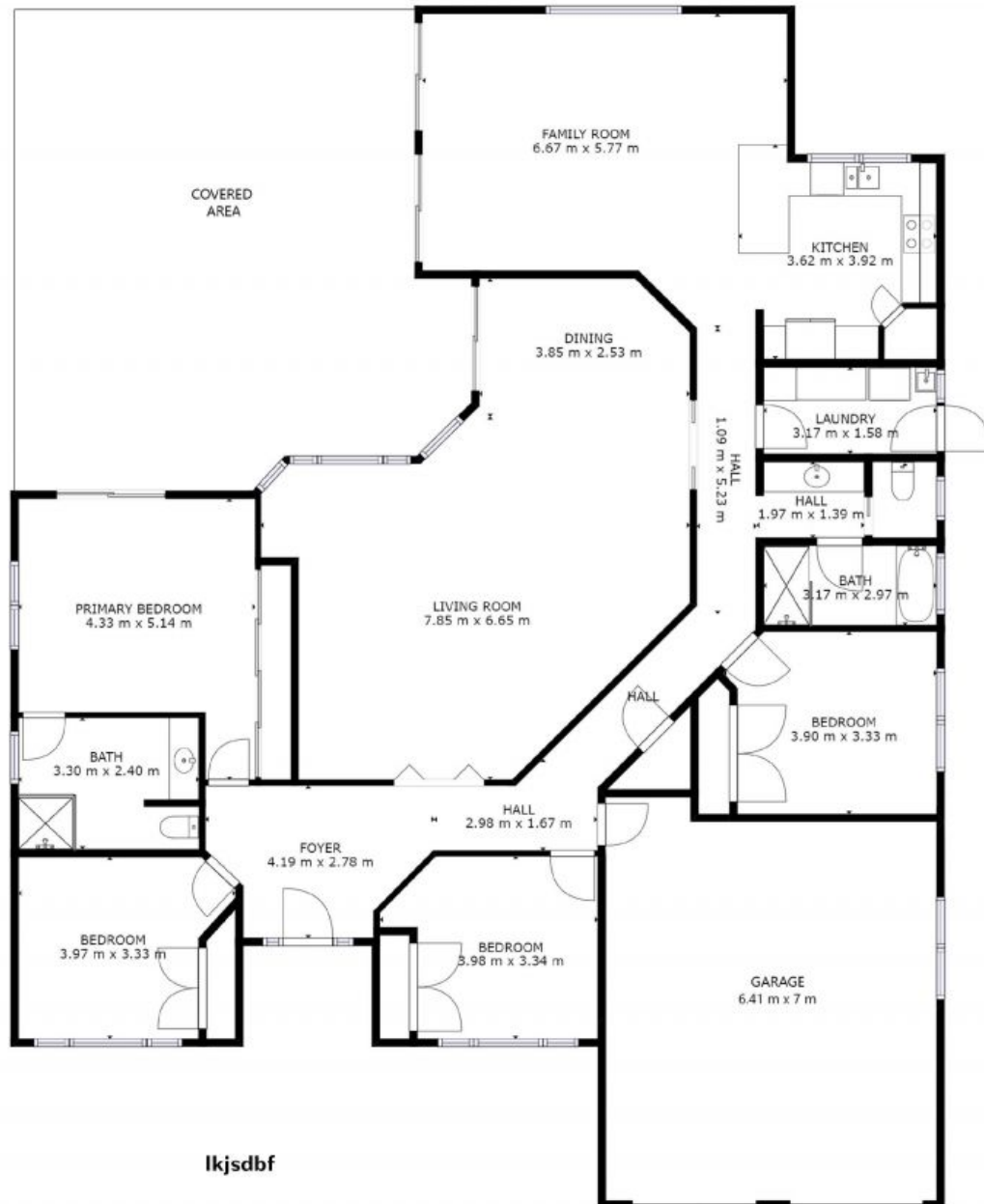
PERCIVAL
PROPERTY

Michelle Percival

0404 466 500

Michelle Percival

0404 466 500



lkjsdbf

GROSS INTERNAL AREA
FLOOR 1: 210 m²
TOTAL: 210 m²

SIZES AND DIMENSIONS ARE APPROXIMATE, ACTUAL MAY VARY.

336 Crestwood Drive, Port Macquarie