



PERCIVAL
PROPERTY

TO ATTEND AN OPEN HOUSE/PRIVATE INSPECTION AT THIS PROPERTY YOU WILL BE REQUIRED TO:

- 1 Provide photo identification

- SANITISE**
Sanitise hands before entering
- QUESTIONNAIRE**
Complete the Covid questionnaire
- MASKS**
Masks must be worn before entering
- COLD & FLU SYMPTOMS**
Do not attend, instead, request a virtual inspection
- SOCIAL DISTANCING**
Maintain 1.5m distance between yourself & others



5 Redgum Circuit Port Macquarie, NSW



Superbly Presented Low Maintenance Home with Side Access

Ideal for the buyer seeking low maintenance living without compromising on luxury, the home offers generously sized living areas designed to accommodate integrated entertaining and private living.

Step inside and discover a spacious entry leading onto a beautifully appointed light filled lounge-media room that can be closed off for complete privacy. The open plan kitchen, dining, and living area draws in streams of northern light and opens onto an all-weather enclosed outdoor patio.

Outdoors is ideally sized for minimal upkeep with level lawn, a rainwater tank, garden shed, easy care established gardens, and secure side access to accommodate a caravan, boat, o...

Price: \$820000

Council Rates: \$2,624.00/year (approx)

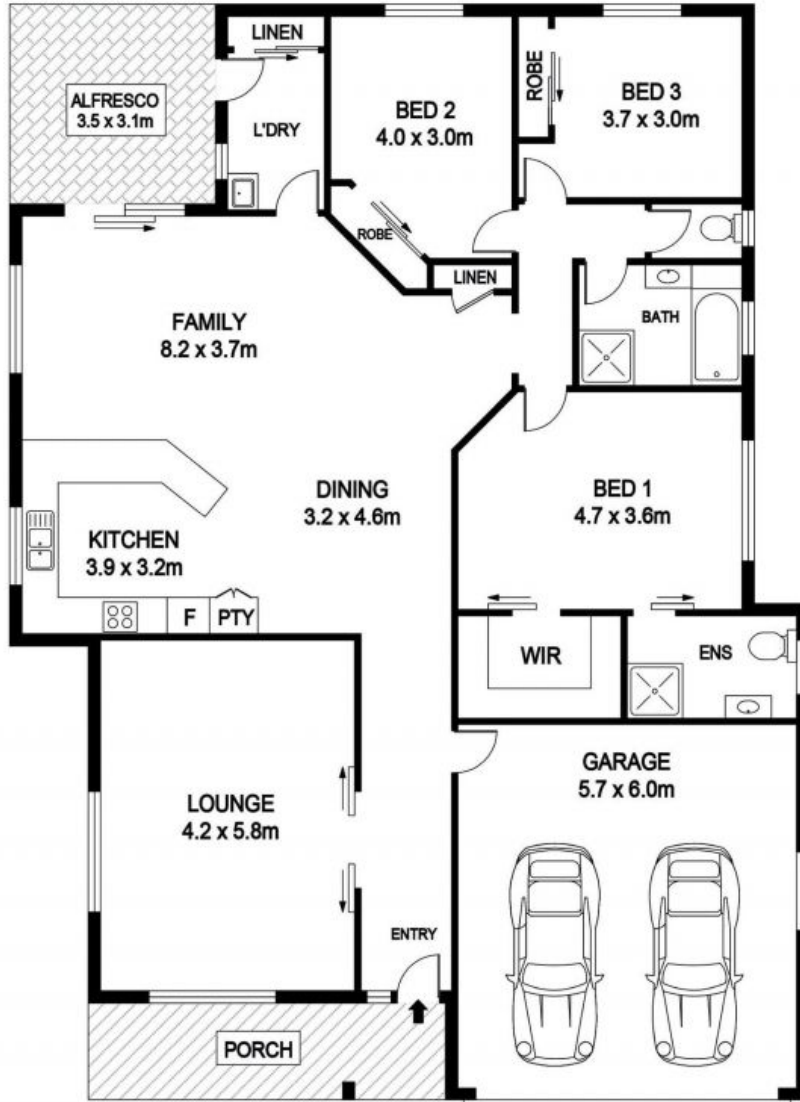
PERCIVAL
PROPERTY

Ayla Bailey

0431 194 876

Ayla Bailey

0431 194 876



5 Redgum Cct, Port Macquarie

INTERNAL : 187.2m²
ALFRESCO : 10.9m²