

305 Crestwood Drive Port Macquarie, NSW



4



3



2

Lifestyle Location Minutes from Beaches, Shopping & Schools

This dual level family home offers traditional proportions and tranquil elevated tree-top views from the entertainer's rear deck. Refreshed with new carpet, it is ready for your immediate enjoyment!

A dual level floor plan commences at an entry foyer where feature tiles are subtle points of detail.

Three living zones provide separation to a layout incorporating formal and informal living. The lounge is spacious and provides direct access to the covered entertaining deck, as does the open plan meals and family room.

Upper level living incorporates the master bedroom complete with a full wall of built-ins and the convenience of an ensuite, two additional bedrooms with built-ins and the main bat...

Price: Guide \$840,000 - \$890,000

Council Rates: \$2,800.00/year (approx)

PERCIVAL
PROPERTY

Michelle Percival

0404 466 500

Glenn Scott

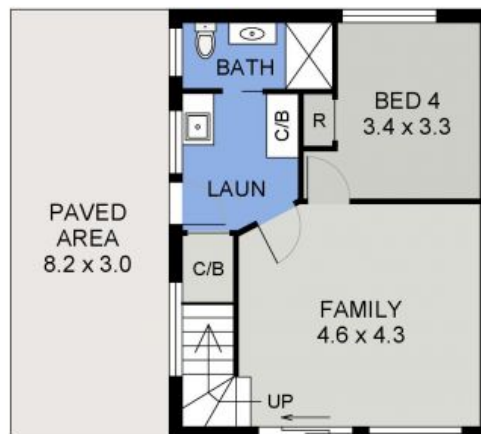
0417 019 756



MAIN FLOOR PLAN

(195 sq m Approx)

Scale - 1:110



LOWER FLOOR PLAN

(51 sq m Approx)

305 CRESTWOOD DRIVE
PORT MACQUARIE