



Guides are indicative only



4 Robin Drive Port Macquarie, NSW

2 2 2

Spacious, Level Living Home.....Great Investment!

Occupying a level 610sqm block in a cul de sac location, this spacious home is ideal with multiple living areas and a great rear yard equipped with inground pool for children and pets to play.

Comprising two bedrooms, the master is situated at the rear of the home, includes ensuite and walk-in-robe. The other bedroom, situation at the front of the home, is both well-proportioned and includes built-in robe. The bathroom with separate toilet is central to the second bedroom and living areas.

With a floorplan previously offering a multipurpose room, that was the third bedroom and could be easily converted back.

The spacious open plan accommodates a tiled entry, light filled lounge, a neat kitchen fea...

Price: Guide \$585,000-\$635,000

Council Rates: \$2,800.00/year (approx)

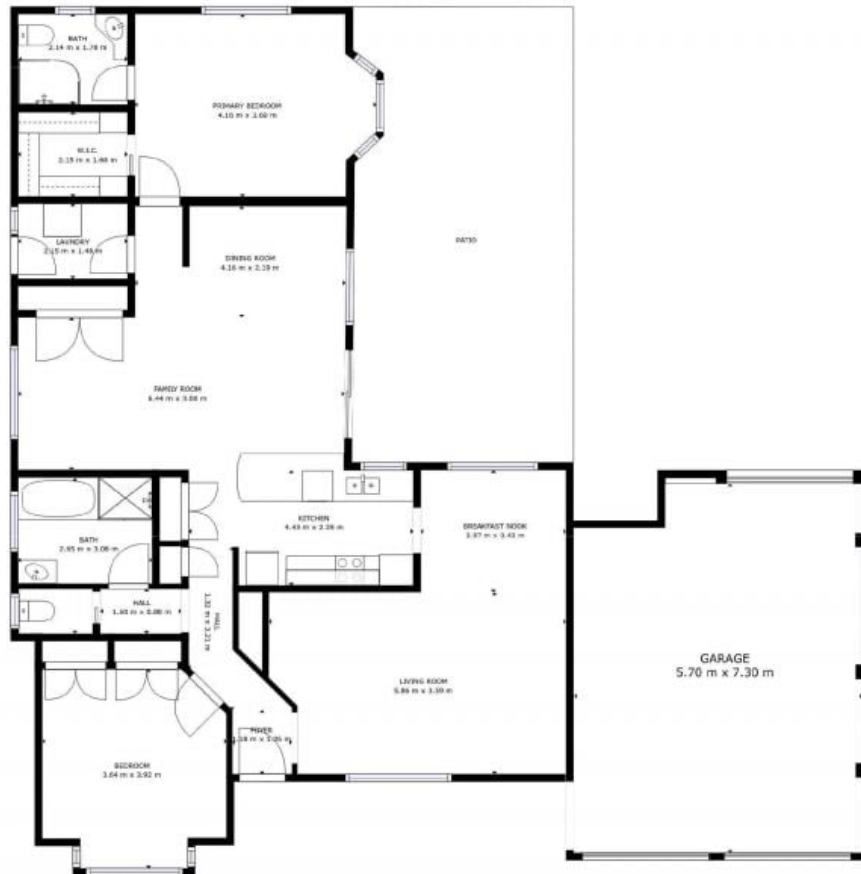
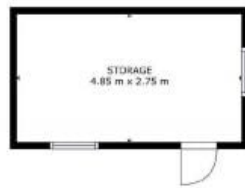
PERCIVAL
PROPERTY

Ally Downing

0418 392 756

Ally Downing

0418 392 756



GROSS INTERNAL AREA
FLOOR 1: 169 m², EXCLUDED AREAS:
PATIO: 38 m²
TOTAL: 169 m²
SIZES AND DIMENSIONS ARE APPROXIMATE, ACTUAL MAY VARY.

4 Robin Drive, Port Macquarie